

REPUBLIC OF CYPRUS

Phone: +357 24802921
Phone: +357 24802923
Fax: +357 24304706
SITA: LCAAPYA
AFS: LCNCZPZX
Email: lcaais@cytanet.com.cy
Post: Aeronautical Information Service
Larnaka Control Tower
Larnaka International Airport
Larnaka Cyprus CY-7130

AIRAC AIP AMDT 005/21

Publication Date: 18 Nov 2021
Effective Date: 30 Dec 2021

1. Amendment content:

The following sections of AIP were updated:

GEN 2.1 Public Holidays 2022
GEN 3.2 List of Aeronautical Charts

AD LCLK 2.24 Aerodrome, 2.24.6.1 new chart

2. Hand corrections to the following pages:

Nil

3. Record entry of amendment in GEN 0.2.**4. This AIP amendment incorporates information contained in the following publications:****NOTAM:**

Nil

SUP:

Nil

AIC:

Nil

5. Insert / remove the pages as shown in list on the next page:

Insert the following pages

GEN 0.2 - 1/2
GEN 0.4 - 1/2
GEN 0.4 - 3/4
GEN 0.6 - 1/2
GEN 0.6 - 3/4
GEN 2.1 - 1/2
GEN 3.2 - 5/6
ENR 0.6 - 1/2
ENR 0.6 - 3/4
AD 0.6 - 1/2
AD 0.6 - 3/4
AD 0.6 - 5/6
AD 2.LCLK - 19/20
AD 2.LCLK 2.24.6.1 - 1/2

Remove the following pages

30 DEC 21	GEN 0.2 - 1/2	02 DEC 21
30 DEC 21	GEN 0.4 - 1/2	02 DEC 21
30 DEC 21	GEN 0.4 - 3/4	02 DEC 21
30 DEC 21	GEN 0.6 - 1/2	02 DEC 21
30 DEC 21	GEN 0.6 - 3/4	02 DEC 21
30 DEC 21	GEN 2.1 - 1/2	05 NOV 20
30 DEC 21	GEN 3.2 - 5/6	02 DEC 21
30 DEC 21	ENR 0.6 - 1/2	02 DEC 21
30 DEC 21	ENR 0.6 - 3/4	02 DEC 21
30 DEC 21	AD 0.6 - 1/2	02 DEC 21
30 DEC 21	AD 0.6 - 3/4	02 DEC 21
30 DEC 21	AD 0.6 - 5/6	02 DEC 21
30 DEC 21	AD 2.LCLK - 19/20	22 APR 21
30 DEC 21	AD 2.LCLK 2.24.6.1 - 1/2	22 APR 21

GEN 0.2 RECORD OF AIP AMENDMENTS

AIRAC AIP AMENDMENT			
<i>NR/Year</i>	<i>Publication date</i>	<i>Date inserted</i>	<i>Inserted by</i>
002/2013	19-Apr-2013	30-May-2013	
001/2014	09-Jan-2014	06-Mar-2014	
002/2014	18-Sep-2014	13-Nov-2014	
001/2015	16-Apr-2015	28-May-2015	
001/2016	24-Dec-2015	04-Feb-2016	
002/2016	21-Jan-2016	31-Mar-2016	
003/2016	04-Aug-2016	13-Oct-2016	
001/2017	30-Mar-2017	25-May-2017	
002/2017	27-Apr-2017	22-Jun-2017	
001/2018	21-Dec-2017	01-Feb-2018	
002/2018	01-Mar-2018	26-Apr-2018	
003/2018	25-Oct-2018	06-Dec-2018	
001/2019	11-Apr-2019	23-May-2019	
002/2019	26-Sep-2019	07-Nov-2019	
001/2020	24-Jan-2020	26-Mar-2020	
002/2020	04-Jul-2020	13-Aug-2020	
003/2020	24-Sep-2020	05-Nov-2020	
001/2021	11-Feb-2021	22-Apr-2021	
002/2021	03-Jun-2021	15-Jul-2021	
003/2021	29-Jul-2021	07-Oct-2021	
004/2021	21-Oct-2021	02-Dec-2021	
005/2021	18-Nov-2021	30-Dec-2021	

NON-AIRAC AIP AMENDMENT			
<i>NR/Year</i>	<i>Publication date</i>	<i>Date inserted</i>	<i>Inserted by</i>
001/2013	16-Jun-2013	30-Jun-2013	
001/2015	12-Aug-2015	13-Aug-2015	
001/2016	06-Jul-2016	07-Jul-2016	

THIS PAGE INTENTIONALLY LEFT BLANK

GEN 0.4 CHECKLIST OF AIP PAGES

PART 1 - GENERAL (GEN)

GEN 0

GEN 0.1 - 1	07 JUL 16	GEN 0.3 - 1	06 DEC 18	GEN 0.5 - 1	04 APR 13
GEN 0.1 - 2	07 JUL 16	GEN 0.3 - 2	06 DEC 18	GEN 0.5 - 2	04 APR 13
GEN 0.1 - 3	22 JUN 17	GEN 0.4 - 1	30 DEC 21	GEN 0.6 - 1	30 DEC 21
GEN 0.1 - 4	22 JUN 17	GEN 0.4 - 2	30 DEC 21	GEN 0.6 - 2	30 DEC 21
GEN 0.2 - 1	30 DEC 21	GEN 0.4 - 3	30 DEC 21	GEN 0.6 - 3	30 DEC 21
GEN 0.2 - 2	30 DEC 21	GEN 0.4 - 4	30 DEC 21	GEN 0.6 - 4	30 DEC 21

GEN 1 NATIONAL REGULATIONS AND REQUIREMENTS

GEN 1.1 - 1	22 APR 21	GEN 1.3 - 5	04 APR 13	GEN 1.6 - 9	05 NOV 20
GEN 1.1 - 2	22 APR 21	GEN 1.3 - 6	04 APR 13	GEN 1.6 - 10	05 NOV 20
GEN 1.1 - 3	02 DEC 21	GEN 1.4 - 1	15 JUL 21	GEN 1.6 - 11	05 NOV 20
GEN 1.1 - 4	02 DEC 21	GEN 1.4 - 2	15 JUL 21	GEN 1.6 - 12	05 NOV 20
GEN 1.2 - 1	25 MAY 17	GEN 1.4 - 3	13 AUG 15	GEN 1.6 - 13	05 NOV 20
GEN 1.2 - 2	25 MAY 17	GEN 1.4 - 4	13 AUG 15	GEN 1.6 - 14	05 NOV 20
GEN 1.2 - 3	22 JUN 17	GEN 1.5 - 1	04 APR 13	GEN 1.6 - 15	05 NOV 20
GEN 1.2 - 4	22 JUN 17	GEN 1.5 - 2	04 APR 13	GEN 1.6 - 16	05 NOV 20
GEN 1.2 - 5	25 MAY 17	GEN 1.5 - 3	13 AUG 15	GEN 1.7 - 1	23 MAY 19
GEN 1.2 - 6	25 MAY 17	GEN 1.5 - 4	13 AUG 15	GEN 1.7 - 2	23 MAY 19
GEN 1.2 - 7	25 MAY 17	GEN 1.6 - 1	05 NOV 20	GEN 1.7 - 3	23 MAY 19
GEN 1.2 - 8	25 MAY 17	GEN 1.6 - 2	05 NOV 20	GEN 1.7 - 4	23 MAY 19
GEN 1.2 - 9	25 MAY 17	GEN 1.6 - 3	05 NOV 20	GEN 1.7 - 5	22 APR 21
GEN 1.2 - 10	25 MAY 17	GEN 1.6 - 4	05 NOV 20	GEN 1.7 - 6	22 APR 21
GEN 1.3 - 1	04 APR 13	GEN 1.6 - 5	05 NOV 20	GEN 1.7 - 7	22 APR 21
GEN 1.3 - 2	04 APR 13	GEN 1.6 - 6	05 NOV 20	GEN 1.7 - 8	22 APR 21
GEN 1.3 - 3	13 NOV 14	GEN 1.6 - 7	05 NOV 20	GEN 1.7 - 9	22 APR 21
GEN 1.3 - 4	13 NOV 14	GEN 1.6 - 8	05 NOV 20	GEN 1.7 - 10	22 APR 21

GEN 2 TABLES AND CODES

GEN 2.1 - 1	30 DEC 21	GEN 2.2 - 13	25 MAY 17	GEN 2.5 - 1	26 MAR 20
GEN 2.1 - 2	30 DEC 21	GEN 2.2 - 14	25 MAY 17	GEN 2.5 - 2	26 MAR 20
GEN 2.2 - 1	25 MAY 17	GEN 2.2 - 15	25 MAY 17	GEN 2.6 - 1	07 JUL 16
GEN 2.2 - 2	25 MAY 17	GEN 2.2 - 16	25 MAY 17	GEN 2.6 - 2	07 JUL 16
GEN 2.2 - 3	25 MAY 17	GEN 2.2 - 17	25 MAY 17	GEN 2.6 - 3	04 APR 13
GEN 2.2 - 4	25 MAY 17	GEN 2.2 - 18	25 MAY 17	GEN 2.6 - 4	04 APR 13
GEN 2.2 - 5	25 MAY 17	GEN 2.2 - 19	25 MAY 17	GEN 2.6 - 5	04 APR 13
GEN 2.2 - 6	25 MAY 17	GEN 2.2 - 20	25 MAY 17	GEN 2.6 - 6	04 APR 13
GEN 2.2 - 7	25 MAY 17	GEN 2.2 - 21	25 MAY 17	GEN 2.6 - 7	04 APR 13
GEN 2.2 - 8	25 MAY 17	GEN 2.2 - 22	25 MAY 17	GEN 2.6 - 8	04 APR 13
GEN 2.2 - 9	25 MAY 17	GEN 2.3 - 1	04 APR 13	GEN 2.7 - 1	07 JUL 16
GEN 2.2 - 10	25 MAY 17	GEN 2.3 - 2	04 APR 13	GEN 2.7 - 2	07 JUL 16
GEN 2.2 - 11	26 MAR 20	GEN 2.4 - 1	04 APR 13	GEN 2.7 - 3	04 APR 13
GEN 2.2 - 12	26 MAR 20	GEN 2.4 - 2	04 APR 13	GEN 2.7 - 4	04 APR 13

GEN 3 SERVICES

GEN 3.1 - 1	06 DEC 18	GEN 3.3 - 3	28 MAY 15	GEN 3.5 - 1	07 NOV 19
GEN 3.1 - 2	06 DEC 18	GEN 3.3 - 4	28 MAY 15	GEN 3.5 - 2	07 NOV 19
GEN 3.1 - 3	06 DEC 18	GEN 3.3 - 5	28 MAY 15	GEN 3.5 - 3	07 NOV 19
GEN 3.1 - 4	06 DEC 18	GEN 3.3 - 6	28 MAY 15	GEN 3.5 - 4	07 NOV 19
GEN 3.1 - 5	22 APR 21	GEN 3.3 - 7	23 MAY 19	GEN 3.5 - 5	07 NOV 19
GEN 3.1 - 6	22 APR 21	GEN 3.3 - 8	23 MAY 19	GEN 3.5 - 6	07 NOV 19
GEN 3.2 - 1	22 JUN 17	GEN 3.3 - 9	23 MAY 19	GEN 3.6 - 1	02 DEC 21
GEN 3.2 - 2	22 JUN 17	GEN 3.3 - 10	23 MAY 19	GEN 3.6 - 2	02 DEC 21
GEN 3.2 - 3	02 DEC 21	GEN 3.4 - 1	23 MAY 19	GEN 3.6 - 3	02 DEC 21
GEN 3.2 - 4	02 DEC 21	GEN 3.4 - 2	23 MAY 19	GEN 3.6 - 4	02 DEC 21
GEN 3.2 - 5	30 DEC 21	GEN 3.4 - 3	23 MAY 19	GEN 3.6 - 5	07 OCT 21
GEN 3.2 - 6	30 DEC 21	GEN 3.4 - 4	23 MAY 19	GEN 3.6 - 6	07 OCT 21
GEN 3.3 - 1	13 AUG 15	GEN 3.4 - 5	04 APR 13		
GEN 3.3 - 2	13 AUG 15	GEN 3.4 - 6	04 APR 13		

GEN 4 CHARGES FOR AERODROMES AND AIR NAVIGATION SERVICES

GEN 4.1 - 1	13 NOV 14	GEN 4.1 - 4	13 AUG 15	GEN 4.2 - 1	15 JUL 21
GEN 4.1 - 2	13 NOV 14	GEN 4.1 - 5	30 JUN 13	GEN 4.2 - 2	15 JUL 21
GEN 4.1 - 3	13 AUG 15	GEN 4.1 - 6	30 JUN 13		

PART 2 - EN-ROUTE (ENR)

ENR 0

ENR 0.1 - 1	04 APR 13	ENR 0.3 - 2	04 APR 13	ENR 0.6 - 1	30 DEC 21
ENR 0.1 - 2	04 APR 13	ENR 0.4 - 1	04 APR 13	ENR 0.6 - 2	30 DEC 21
ENR 0.2 - 1	04 APR 13	ENR 0.4 - 2	04 APR 13	ENR 0.6 - 3	30 DEC 21
ENR 0.2 - 2	04 APR 13	ENR 0.5 - 1	04 APR 13	ENR 0.6 - 4	30 DEC 21
ENR 0.3 - 1	04 APR 13	ENR 0.5 - 2	04 APR 13		

ENR 1 GENERAL RULES AND PROCEDURES

ENR 1.1 - 1	28 MAY 15	ENR 1.2 - 2	07 NOV 19	ENR 1.10 - 3	23 MAY 19
ENR 1.1 - 2	28 MAY 15	ENR 1.2 - 3	07 NOV 19	ENR 1.10 - 4	23 MAY 19
ENR 1.1 - 3	28 MAY 15	ENR 1.2 - 4	07 NOV 19	ENR 1.10 - 5	23 MAY 19
ENR 1.1 - 4	28 MAY 15	ENR 1.3 - 1	28 MAY 15	ENR 1.10 - 6	23 MAY 19
ENR 1.1 - 5	28 MAY 15	ENR 1.3 - 2	28 MAY 15	ENR 1.10 - 7	23 MAY 19
ENR 1.1 - 6	28 MAY 15	ENR 1.4 - 1	13 AUG 20	ENR 1.10 - 8	23 MAY 19
ENR 1.1 - 7	04 FEB 16	ENR 1.4 - 2	13 AUG 20	ENR 1.10 - 9	23 MAY 19
ENR 1.1 - 8	04 FEB 16	ENR 1.4 - 3	13 AUG 20	ENR 1.10 - 10	23 MAY 19
ENR 1.1 - 9	04 FEB 16	ENR 1.4 - 4	13 AUG 20	ENR 1.10 - 11	23 MAY 19
ENR 1.1 - 10	04 FEB 16	ENR 1.5 - 1	15 JUL 21	ENR 1.10 - 12	23 MAY 19
ENR 1.1 - 11	04 FEB 16	ENR 1.5 - 2	15 JUL 21	ENR 1.11 - 1	22 APR 21
ENR 1.1 - 12	04 FEB 16	ENR 1.6 - 1	13 NOV 14	ENR 1.11 - 2	22 APR 21
ENR 1.1 - 13	04 FEB 16	ENR 1.6 - 2	13 NOV 14	ENR 1.12 - 1	28 MAY 15
ENR 1.1 - 14	04 FEB 16	ENR 1.6 - 3	05 NOV 20	ENR 1.12 - 2	28 MAY 15
ENR 1.1 - 15	04 FEB 16	ENR 1.6 - 4	05 NOV 20	ENR 1.12 - 3	28 MAY 15
ENR 1.1 - 16	04 FEB 16	ENR 1.6 - 5	05 NOV 20	ENR 1.12 - 4	28 MAY 15
ENR 1.1 - 17	04 FEB 16	ENR 1.6 - 6	05 NOV 20	ENR 1.12 - 5	28 MAY 15
ENR 1.1 - 18	04 FEB 16	ENR 1.6 - 7	05 NOV 20	ENR 1.12 - 6	28 MAY 15
ENR 1.1 - 19	04 FEB 16	ENR 1.6 - 8	05 NOV 20	ENR 1.13 - 1	28 MAY 15
ENR 1.1 - 20	04 FEB 16	ENR 1.6 - 9	05 NOV 20	ENR 1.13 - 2	28 MAY 15
ENR 1.1 - 21	04 FEB 16	ENR 1.6 - 10	05 NOV 20	ENR 1.13 - 3	28 MAY 15
ENR 1.1 - 22	04 FEB 16	ENR 1.7 - 1	15 JUL 21	ENR 1.13 - 4	28 MAY 15
ENR 1.1 - 23	04 FEB 16	ENR 1.7 - 2	15 JUL 21	ENR 1.14 - 1	04 APR 13
ENR 1.1 - 24	04 FEB 16	ENR 1.7 - 3	15 JUL 21	ENR 1.14 - 2	04 APR 13
ENR 1.1 - 25	04 FEB 16	ENR 1.7 - 4	15 JUL 21	ENR 1.14 - 3	23 MAY 19
ENR 1.1 - 26	04 FEB 16	ENR 1.8 - 1	13 AUG 20	ENR 1.14 - 4	23 MAY 19
ENR 1.1 - 27	04 FEB 16	ENR 1.8 - 2	13 AUG 20	ENR 1.14 - 5	23 MAY 19
ENR 1.1 - 28	04 FEB 16	ENR 1.9 - 1	02 DEC 21	ENR 1.14 - 6	23 MAY 19
ENR 1.1 - 29	04 FEB 16	ENR 1.9 - 2	02 DEC 21	ENR 1.14 - 7	23 MAY 19
ENR 1.1 - 30	04 FEB 16	ENR 1.9 - 3	02 DEC 21	ENR 1.14 - 8	23 MAY 19
ENR 1.1 - 31	04 FEB 16	ENR 1.9 - 4	02 DEC 21	ENR 1.14 - 9	23 MAY 19
ENR 1.1 - 32	04 FEB 16	ENR 1.10 - 1	13 AUG 15	ENR 1.14 - 10	23 MAY 19
ENR 1.2 - 1	07 NOV 19	ENR 1.10 - 2	13 AUG 15		

ENR 2 AIR TRAFFIC SERVICES AIRSPACE

ENR 2.1 - 1	02 DEC 21	ENR 2.1 - 3	02 DEC 21	ENR 2.2 - 1	04 APR 13
ENR 2.1 - 2	02 DEC 21	ENR 2.1 - 4	02 DEC 21	ENR 2.2 - 2	04 APR 13

ENR 3 ATS ROUTES

ENR 3.1 - 1	15 JUL 21	ENR 3.1 - 9	15 JUL 21	ENR 3.3 - 1	13 AUG 20
ENR 3.1 - 2	15 JUL 21	ENR 3.1 - 10	15 JUL 21	ENR 3.3 - 2	13 AUG 20
ENR 3.1 - 3	15 JUL 21	ENR 3.1 - 11	15 JUL 21	ENR 3.3 - 3	13 AUG 20
ENR 3.1 - 4	15 JUL 21	ENR 3.1 - 12	15 JUL 21	ENR 3.3 - 4	13 AUG 20
ENR 3.1 - 5	13 AUG 20	ENR 3.1 - 13	26 MAR 20	ENR 3.3 - 5	13 AUG 20
ENR 3.1 - 6	13 AUG 20	ENR 3.1 - 14	26 MAR 20	ENR 3.3 - 6	13 AUG 20
ENR 3.1 - 7	13 AUG 20	ENR 3.2 - 1	13 AUG 20	ENR 3.3 - 7	15 JUL 21
ENR 3.1 - 8	13 AUG 20	ENR 3.2 - 2	13 AUG 20	ENR 3.3 - 8	15 JUL 21

ENR 3.3 - 9	02 DEC 21	ENR 3.3 - 21	13 AUG 20	ENR 3.3 - 33	13 AUG 20
ENR 3.3 - 10	02 DEC 21	ENR 3.3 - 22	13 AUG 20	ENR 3.3 - 34	13 AUG 20
ENR 3.3 - 11	13 AUG 20	ENR 3.3 - 23	15 JUL 21	ENR 3.3 - 35	13 AUG 20
ENR 3.3 - 12	13 AUG 20	ENR 3.3 - 24	15 JUL 21	ENR 3.3 - 36	13 AUG 20
ENR 3.3 - 13	13 AUG 20	ENR 3.3 - 25	13 AUG 20	ENR 3.4 - 1	04 APR 13
ENR 3.3 - 14	13 AUG 20	ENR 3.3 - 26	13 AUG 20	ENR 3.4 - 2	04 APR 13
ENR 3.3 - 15	13 AUG 20	ENR 3.3 - 27	13 AUG 20	ENR 3.5 - 1	04 APR 13
ENR 3.3 - 16	13 AUG 20	ENR 3.3 - 28	13 AUG 20	ENR 3.5 - 2	04 APR 13
ENR 3.3 - 17	13 AUG 20	ENR 3.3 - 29	15 JUL 21	ENR 3.6 - 1	26 MAR 20
ENR 3.3 - 18	13 AUG 20	ENR 3.3 - 30	15 JUL 21	ENR 3.6 - 2	26 MAR 20
ENR 3.3 - 19	13 AUG 20	ENR 3.3 - 31	13 AUG 20		
ENR 3.3 - 20	13 AUG 20	ENR 3.3 - 32	13 AUG 20		

ENR 4 RADIO NAVIGATION AIDS/SYSTEMS

ENR 4.1 - 1	07 OCT 21	ENR 4.3 - 2	04 APR 13	ENR 4.4 - 5	07 OCT 21
ENR 4.1 - 2	07 OCT 21	ENR 4.4 - 1	07 OCT 21	ENR 4.4 - 6	07 OCT 21
ENR 4.2 - 1	04 APR 13	ENR 4.4 - 2	07 OCT 21	ENR 4.5 - 1	04 APR 13
ENR 4.2 - 2	04 APR 13	ENR 4.4 - 3	07 OCT 21	ENR 4.5 - 2	04 APR 13
ENR 4.3 - 1	04 APR 13	ENR 4.4 - 4	07 OCT 21		

ENR 5 NAVIGATION WARNINGS

ENR 5.1 - 1	01 FEB 18	ENR 5.2 - 5	01 FEB 18	ENR 5.4 - 5	07 OCT 21
ENR 5.1 - 2	01 FEB 18	ENR 5.2 - 6	01 FEB 18	ENR 5.4 - 6	07 OCT 21
ENR 5.1 - 3	05 NOV 20	ENR 5.3 - 1	04 APR 13	ENR 5.5 - 1	04 APR 13
ENR 5.1 - 4	05 NOV 20	ENR 5.3 - 2	04 APR 13	ENR 5.5 - 2	04 APR 13
ENR 5.2 - 1	01 FEB 18	ENR 5.4 - 1	07 JUL 16	ENR 5.6 - 1	04 APR 13
ENR 5.2 - 2	01 FEB 18	ENR 5.4 - 2	07 JUL 16	ENR 5.6 - 2	04 APR 13
ENR 5.2 - 3	23 MAY 19	ENR 5.4 - 3	25 MAY 17		
ENR 5.2 - 4	23 MAY 19	ENR 5.4 - 4	25 MAY 17		

ENR 6 EN-ROUTE CHARTS

ENR 6 - 1	26 MAR 20	ENR 6.1 - 3	13 AUG 20	ENR 6.2.1 - 1	01 FEB 18
ENR 6 - 2	26 MAR 20	ENR 6.1 - 4	13 AUG 20	ENR 6.2.1 - 2	01 FEB 18
ENR 6.1 - 1	13 AUG 20	ENR 6.2 - 1	05 NOV 20		
ENR 6.1 - 2	13 AUG 20	ENR 6.2 - 2	05 NOV 20		

PART 3 - AERODROMES (AD)

AD 0

AD 0.1 - 1	04 APR 13	AD 0.4 - 1	04 APR 13	AD 0.6 - 3	30 DEC 21
AD 0.1 - 2	04 APR 13	AD 0.4 - 2	04 APR 13	AD 0.6 - 4	30 DEC 21
AD 0.2 - 1	04 APR 13	AD 0.5 - 1	04 APR 13	AD 0.6 - 5	30 DEC 21
AD 0.2 - 2	04 APR 13	AD 0.5 - 2	04 APR 13	AD 0.6 - 6	30 DEC 21
AD 0.3 - 1	04 APR 13	AD 0.6 - 1	30 DEC 21		
AD 0.3 - 2	04 APR 13	AD 0.6 - 2	30 DEC 21		

AD 1 AERODROMES/HELIPORTS - INTRODUCTION

AD 1.1 - 1	04 APR 13	AD 1.2 - 1	22 APR 21	AD 1.4 - 1	04 APR 13
AD 1.1 - 2	04 APR 13	AD 1.2 - 2	22 APR 21	AD 1.4 - 2	04 APR 13
AD 1.1 - 3	23 MAY 19	AD 1.3 - 1	04 APR 13	AD 1.5 - 1	23 MAY 19
AD 1.1 - 4	23 MAY 19	AD 1.3 - 2	04 APR 13	AD 1.5 - 2	23 MAY 19

AD 2 AERODROMES

AD 2.LCLK - 1	15 JUL 21	AD 2.LCLK - 8	05 NOV 20	AD 2.LCLK - 15	05 NOV 20
AD 2.LCLK - 2	15 JUL 21	AD 2.LCLK - 9	05 NOV 20	AD 2.LCLK - 16	05 NOV 20
AD 2.LCLK - 3	13 AUG 20	AD 2.LCLK - 10	05 NOV 20	AD 2.LCLK - 17	22 APR 21
AD 2.LCLK - 4	13 AUG 20	AD 2.LCLK - 11	07 OCT 21	AD 2.LCLK - 18	22 APR 21
AD 2.LCLK - 5	13 AUG 20	AD 2.LCLK - 12	07 OCT 21	AD 2.LCLK - 19	30 DEC 21
AD 2.LCLK - 6	13 AUG 20	AD 2.LCLK - 13	05 NOV 20	AD 2.LCLK - 20	30 DEC 21
AD 2.LCLK - 7	05 NOV 20	AD 2.LCLK - 14	05 NOV 20	AD 2.LCLK 2.24.1.1 - 1	13 AUG 20

AD 2.LCLK 2.24.1.1 - 2	13 AUG 20	AD 2.LCLK 2.24.4.1 - 2	22 APR 21	AD 2.LCPH 2.24.2.4 - 2	02 DEC 21
AD 2.LCLK 2.24.1.2 - 1	13 AUG 20	AD 2.LCLK 2.24.4.2 - 1	22 APR 21	AD 2.LCPH 2.24.2.5 - 1	02 DEC 21
AD 2.LCLK 2.24.1.2 - 2	13 AUG 20	AD 2.LCLK 2.24.4.2 - 2	22 APR 21	AD 2.LCPH 2.24.2.5 - 2	02 DEC 21
AD 2.LCLK 2.24.1.3 - 1	13 NOV 14	AD 2.LCLK 2.24.4.3 - 1	22 APR 21	AD 2.LCPH 2.24.2.6 - 1	07 OCT 21
AD 2.LCLK 2.24.1.3 - 2	13 NOV 14	AD 2.LCLK 2.24.4.3 - 2	22 APR 21	AD 2.LCPH 2.24.2.6 - 2	07 OCT 21
AD 2.LCLK 2.24.1.4 - 1	13 NOV 14	AD 2.LCLK 2.24.4.4 - 1	22 APR 21	AD 2.LCPH 2.24.2.7 - 1	07 OCT 21
AD 2.LCLK 2.24.1.4 - 2	13 NOV 14	AD 2.LCLK 2.24.4.4 - 2	22 APR 21	AD 2.LCPH 2.24.2.7 - 2	07 OCT 21
AD 2.LCLK 2.24.1.5 - 1	10 MAR 11	AD 2.LCLK 2.24.4.5 - 1	22 APR 21	AD 2.LCPH 2.24.2.8 - 1	07 OCT 21
AD 2.LCLK 2.24.1.5 - 2	10 MAR 11	AD 2.LCLK 2.24.4.5 - 2	22 APR 21	AD 2.LCPH 2.24.2.8 - 2	07 OCT 21
AD 2.LCLK 2.24.2.1 - 1	15 JUL 21	AD 2.LCLK 2.24.4.6 - 1	22 APR 21	AD 2.LCPH 2.24.2.9 - 1	07 OCT 21
AD 2.LCLK 2.24.2.1 - 2	15 JUL 21	AD 2.LCLK 2.24.4.6 - 2	22 APR 21	AD 2.LCPH 2.24.2.9 - 2	07 OCT 21
AD 2.LCLK 2.24.2.2 - 1	22 APR 21	AD 2.LCLK 2.24.4.7 - 1	22 APR 21	AD 2.LCPH 2.24.2.10 - 1	07 OCT 21
AD 2.LCLK 2.24.2.2 - 2	22 APR 21	AD 2.LCLK 2.24.4.7 - 2	22 APR 21	AD 2.LCPH 2.24.2.10 - 2	07 OCT 21
AD 2.LCLK 2.24.2.3 - 1	22 APR 21	AD 2.LCLK 2.24.5.1 - 1	22 APR 21	AD 2.LCPH 2.24.2.11 - 1	07 OCT 21
AD 2.LCLK 2.24.2.3 - 2	22 APR 21	AD 2.LCLK 2.24.5.1 - 2	22 APR 21	AD 2.LCPH 2.24.2.11 - 2	07 OCT 21
AD 2.LCLK 2.24.2.4 - 1	15 JUL 21	AD 2.LCLK 2.24.6.1 - 1	30 DEC 21	AD 2.LCPH 2.24.2.12 - 1	07 OCT 21
AD 2.LCLK 2.24.2.4 - 2	15 JUL 21	AD 2.LCLK 2.24.6.1 - 2	30 DEC 21	AD 2.LCPH 2.24.2.12 - 2	07 OCT 21
AD 2.LCLK 2.24.2.5 - 1	15 JUL 21	AD 2.LCPH - 1	07 OCT 21	AD 2.LCPH 2.24.2.13 - 1	02 DEC 21
AD 2.LCLK 2.24.2.5 - 2	15 JUL 21	AD 2.LCPH - 2	07 OCT 21	AD 2.LCPH 2.24.2.13 - 2	02 DEC 21
AD 2.LCLK 2.24.2.6 - 1	15 JUL 21	AD 2.LCPH - 3	07 OCT 21	AD 2.LCPH 2.24.3.1 - 1	07 OCT 21
AD 2.LCLK 2.24.2.6 - 2	15 JUL 21	AD 2.LCPH - 4	07 OCT 21	AD 2.LCPH 2.24.3.1 - 2	07 OCT 21
AD 2.LCLK 2.24.2.7 - 1	15 JUL 21	AD 2.LCPH - 5	07 OCT 21	AD 2.LCPH 2.24.3.2 - 1	07 OCT 21
AD 2.LCLK 2.24.2.7 - 2	15 JUL 21	AD 2.LCPH - 6	07 OCT 21	AD 2.LCPH 2.24.3.2 - 2	07 OCT 21
AD 2.LCLK 2.24.2.8 - 1	15 JUL 21	AD 2.LCPH - 7	07 OCT 21	AD 2.LCPH 2.24.4.1 - 1	02 DEC 21
AD 2.LCLK 2.24.2.8 - 2	15 JUL 21	AD 2.LCPH - 8	07 OCT 21	AD 2.LCPH 2.24.4.1 - 2	02 DEC 21
AD 2.LCLK 2.24.2.9 - 1	22 APR 21	AD 2.LCPH - 9	07 OCT 21	AD 2.LCPH 2.24.4.2 - 1	07 OCT 21
AD 2.LCLK 2.24.2.9 - 2	22 APR 21	AD 2.LCPH - 10	07 OCT 21	AD 2.LCPH 2.24.4.2 - 2	07 OCT 21
AD 2.LCLK 2.24.2.10 - 1	22 APR 21	AD 2.LCPH - 11	07 OCT 21	AD 2.LCPH 2.24.4.3 - 1	02 DEC 21
AD 2.LCLK 2.24.2.10 - 2	22 APR 21	AD 2.LCPH - 12	07 OCT 21	AD 2.LCPH 2.24.4.3 - 2	02 DEC 21
AD 2.LCLK 2.24.2.11 - 1	15 JUL 21	AD 2.LCPH 2.24.1.1 - 1	02 DEC 21	AD 2.LCPH 2.24.4.4 - 1	02 DEC 21
AD 2.LCLK 2.24.2.11 - 2	15 JUL 21	AD 2.LCPH 2.24.1.1 - 2	02 DEC 21	AD 2.LCPH 2.24.4.4 - 2	02 DEC 21
AD 2.LCLK 2.24.2.12 - 1	15 JUL 21	AD 2.LCPH 2.24.1.2 - 1	07 OCT 21	AD 2.LCPH 2.24.5.1 - 1	07 OCT 21
AD 2.LCLK 2.24.2.12 - 2	15 JUL 21	AD 2.LCPH 2.24.1.2 - 2	07 OCT 21	AD 2.LCPH 2.24.5.1 - 2	07 OCT 21
AD 2.LCLK 2.24.2.13 - 1	22 APR 21	AD 2.LCPH 2.24.1.3 - 1	07 OCT 21	AD 2.LCPH 2.24.5.2 - 1	07 OCT 21
AD 2.LCLK 2.24.2.13 - 2	22 APR 21	AD 2.LCPH 2.24.1.3 - 2	07 OCT 21	AD 2.LCPH 2.24.5.2 - 2	07 OCT 21
AD 2.LCLK 2.24.3.1 - 1	15 JUL 21	AD 2.LCPH 2.24.1.4 - 1	21 OCT 10	AD 2.LCNC - 1	07 NOV 19
AD 2.LCLK 2.24.3.1 - 2	15 JUL 21	AD 2.LCPH 2.24.1.4 - 2	21 OCT 10	AD 2.LCNC - 2	07 NOV 19
AD 2.LCLK 2.24.3.2 - 1	15 JUL 21	AD 2.LCPH 2.24.2.1 - 1	07 OCT 21	AD 2.LCRA - 1	04 APR 13
AD 2.LCLK 2.24.3.2 - 2	15 JUL 21	AD 2.LCPH 2.24.2.1 - 2	07 OCT 21	AD 2.LCRA - 2	04 APR 13
AD 2.LCLK 2.24.3.3 - 1	15 JUL 21	AD 2.LCPH 2.24.2.2 - 1	07 OCT 21	AD 2.LCRA - 3	04 APR 13
AD 2.LCLK 2.24.3.3 - 2	15 JUL 21	AD 2.LCPH 2.24.2.2 - 2	07 OCT 21	AD 2.LCRA - 4	04 APR 13
AD 2.LCLK 2.24.3.4 - 1	15 JUL 21	AD 2.LCPH 2.24.2.3 - 1	07 OCT 21	AD 2.LCRA - 5	22 APR 21
AD 2.LCLK 2.24.3.4 - 2	15 JUL 21	AD 2.LCPH 2.24.2.3 - 2	07 OCT 21	AD 2.LCRA - 6	22 APR 21
AD 2.LCLK 2.24.4.1 - 1	22 APR 21	AD 2.LCPH 2.24.2.4 - 1	02 DEC 21		

GEN 0.6 TABLE OF CONTENTS TO PART 1

GEN 0

GEN 0.1	PREFACE	GEN 0.1 - 1
1.	Name of the Publishing Authority	GEN 0.1 - 1
2.	Applicable ICAO Documents	GEN 0.1 - 1
3.	Publication Media	GEN 0.1 - 1
4.	The AIP Structure and Established Regular Amendment Interval.....	GEN 0.1 - 1
5.	Copyright Policy	GEN 0.1 - 2
6.	Service to Contact in Case of Detected AIP Errors or Omissions	GEN 0.1 - 2
GEN 0.2	RECORD OF AIP AMENDMENTS	GEN 0.2 - 1
GEN 0.3	RECORD OF AIP SUPPLEMENTS	GEN 0.3 - 1
GEN 0.4	CHECKLIST OF AIP PAGES	GEN 0.4 - 1
GEN 0.5	LIST OF HAND AMENDMENTS TO THE AIP	GEN 0.5 - 1
GEN 0.6	TABLE OF CONTENTS TO PART 1	GEN 0.6 - 1

GEN 1 NATIONAL REGULATIONS AND REQUIREMENTS

GEN 1.1	DESIGNATED AUTHORITIES	GEN 1.1 - 1
1.	Civil Aviation	GEN 1.1 - 1
2.	Meteorology	GEN 1.1 - 1
3.	Customs.....	GEN 1.1 - 1
4.	Immigration	GEN 1.1 - 1
5.	Health	GEN 1.1 - 1
6.	En-route and Aerodrome/Heliport charges	GEN 1.1 - 2
7.	Animal, Plant and Agricultural quarantine.....	GEN 1.1 - 2
8.	Aircraft Accident and Incident Investigation Board (AAIIB).....	GEN 1.1 - 3
9.	Lands and Surveys	GEN 1.1 - 3
10.	Ministry of Foreign Affairs	GEN 1.1 - 3
11.	Airport Operator	GEN 1.1 - 3
12.	Transport of Dangerous/ Radioactive Goods	GEN 1.1 - 4
13.	Search and Rescue (SAR)	GEN 1.1 - 4
14.	Airport Slot Coordination.....	GEN 1.1 - 4
GEN 1.2	ENTRY, TRANSIT AND DEPARTURE OF AIRCRAFT	GEN 1.2 - 1
1.	General	GEN 1.2 - 1
2.	Scheduled Flights	GEN 1.2 - 3
3.	Documentary Requirements for Clearance of Aircraft	GEN 1.2 - 5
4.	Prior Information on Arrival	GEN 1.2 - 5
5.	Non-scheduled - Commercial Flights.....	GEN 1.2 - 6
6.	Inclusive Tour (ITC)	GEN 1.2 - 7
7.	Cargo Flights	GEN 1.2 - 8
8.	Private Flights	GEN 1.2 - 8
9.	Public Health Measures Applied to Aircraft	GEN 1.2 - 9
10.	State Aircraft.....	GEN 1.2 - 10
GEN 1.3	ENTRY, TRANSIT AND DEPARTURE OF PASSENGERS AND CREW	GEN 1.3 - 1
1.	General	GEN 1.3 - 1
2.	Customs Requirements	GEN 1.3 - 1
3.	Immigration Requirements.....	GEN 1.3 - 2
4.	Entry Regulations for Cyprus.....	GEN 1.3 - 2

5.	Admission and Transit Restrictions.....	GEN 1.3 - 2
6.	Visas	GEN 1.3 - 2
7.	Issue of Visas.....	GEN 1.3 - 4
8.	Visa Application Procedure and Documents Required	GEN 1.3 - 4
9.	Public Health Requirements.....	GEN 1.3 - 4
GEN 1.4	ENTRY, TRANSIT AND DEPARTURE OF CARGO	GEN 1.4 - 1
1.	Customs Requirements and Procedures Concerning Cargo and Other Articles	GEN 1.4 - 1
2.	Transit of Cargo	GEN 1.4 - 1
3.	Transport of Dangerous Goods.....	GEN 1.4 - 1
4.	Import of Animals	GEN 1.4 - 2
5.	Export of Animals	GEN 1.4 - 2
6.	Import of Plants	GEN 1.4 - 3
7.	Export of Plants.....	GEN 1.4 - 3
GEN 1.5	AIRCRAFT INSTRUMENTS, EQUIPMENT AND FLIGHT DOCUMENTS	GEN 1.5 - 1
1.	General	GEN 1.5 - 1
2.	Special Equipment to be Carried	GEN 1.5 - 1
3.	Equipment to be Carried on All Types of Flights.....	GEN 1.5 - 1
GEN 1.6	SUMMARY OF NATIONAL REGULATIONS AND INTERNATIONAL AGREEMENTS/CONVENTIONS	GEN 1.6 - 1
1.	Legal Acts of the European Union	GEN 1.6 - 1
2.	International Agreements/Conventions	GEN 1.6 - 9
3.	National Law	GEN 1.6 - 14
4. National Regulative Acts	GEN 1.6 - 14
GEN 1.7	DIFFERENCES FROM ICAO STANDARDS, RECOMMENDED PRACTICES AND PROCEDURES	GEN 1.7 - 1
GEN 2	TABLES AND CODES	
GEN 2.1	MEASURING SYSTEM, AIRCRAFT MARKINGS, HOLIDAYS	GEN 2.1 - 1
1.	Units of Measurement	GEN 2.1 - 1
2.	Temporal Reference System	GEN 2.1 - 1
3.	Geodetic Reference Datum	GEN 2.1 - 1
4.	Aircraft Nationality and Registration Marks	GEN 2.1 - 2
5.	Public Holidays	GEN 2.1 - 2
GEN 2.2	ABBREVIATIONS USED IN AIS PUBLICATIONS	GEN 2.2 - 1
GEN 2.3	CHART SYMBOLS	GEN 2.3 - 1
GEN 2.4	LOCATION INDICATORS	GEN 2.4 - 1
GEN 2.5	LIST OF RADIO NAVIGATION AIDS	GEN 2.5 - 1
GEN 2.6	CONVERSIONS OF UNITS OF MEASUREMENT	GEN 2.6 - 1
GEN 2.7	SUNRISE/SUNSET	GEN 2.7 - 1
1.	General	GEN 2.7 - 1
2.	Alphabetical index.....	GEN 2.7 - 1
3.	Sunrise - Sunset tables.....	GEN 2.7 - 2
GEN 3	SERVICES	
GEN 3.1	AERONAUTICAL INFORMATION SERVICES	GEN 3.1 - 1
1.	Responsible Service	GEN 3.1 - 1
2.	Area of Responsibility	GEN 3.1 - 2

3.	Aeronautical Publications	GEN 3.1 - 2
4.	AIRAC System.....	GEN 3.1 - 4
5.	Pre-flight Information Service at Aerodromes.....	GEN 3.1 - 5
6.	Electronic Terrain and Obstacle Data.....	GEN 3.1 - 6
GEN 3.2	AERONAUTICAL CHARTS	GEN 3.2 - 1
1.	Responsible Service	GEN 3.2 - 1
2.	Maintenance of Charts.....	GEN 3.2 - 1
3.	Purchase Arrangements	GEN 3.2 - 1
4.	Aeronautical Chart Series Available	GEN 3.2 - 1
5.	List of Aeronautical Charts Available	GEN 3.2 - 4
6.	TOPOGRAPHICAL CHARTS	GEN 3.2 - 6
GEN 3.3	AIR TRAFFIC SERVICES	GEN 3.3 - 1
1.	Responsible Service	GEN 3.3 - 1
2.	Area of Responsibility	GEN 3.3 - 1
3.	Types of Services	GEN 3.3 - 2
4.	Co-ordination Between the Operator and ATS	GEN 3.3 - 8
5.	Minimum Flight Altitudes.....	GEN 3.3 - 8
6.	ATS Units Address list.....	GEN 3.3 - 9
GEN 3.4	COMMUNICATION SERVICES	GEN 3.4 - 1
1.	Responsible Service	GEN 3.4 - 1
2.	Area of Responsibility	GEN 3.4 - 1
3.	Types of Service	GEN 3.4 - 1
4.	Requirements and Conditions	GEN 3.4 - 3
GEN 3.5	METEOROLOGICAL SERVICES	GEN 3.5 - 1
1.	Responsible Service	GEN 3.5 - 1
2.	Area of Responsibility	GEN 3.5 - 1
3.	Meteorological Observations and Reports.....	GEN 3.5 - 2
4.	Type of Services	GEN 3.5 - 2
5.	Notification Required from Operators	GEN 3.5 - 2
6.	Aircraft Reports Required from Operators	GEN 3.5 - 2
7.	VOLMET Services	GEN 3.5 - 3
8.	SIGMET and AIRMET Service	GEN 3.5 - 3
9.	Pilot Reports of Vertical Wind Shear on Take-off or Landing	GEN 3.5 - 5
10.	Transmission of Special Air Reports.....	GEN 3.5 - 5
11.	Transmission of Amended Aerodrome Forecasts	GEN 3.5 - 5
12.	Meteorological Briefing at Aerodromes.....	GEN 3.5 - 5
GEN 3.6	SEARCH AND RESCUE	GEN 3.6 - 1
1.	Responsible Service	GEN 3.6 - 1
2.	Area of Responsibility	GEN 3.6 - 2
3.	Types of Service	GEN 3.6 - 2
4.	SAR Agreements	GEN 3.6 - 3
5.	Conditions of Availability	GEN 3.6 - 3
6.	Procedures and Signals Used	GEN 3.6 - 3
7.	Search and Rescue Signals	GEN 3.6 - 5
GEN 4	CHARGES FOR AERODROMES AND AIR NAVIGATION SERVICES	
GEN 4.1	AERODROME CHARGES	GEN 4.1 - 1
1.	Landing of Aircraft.....	GEN 4.1 - 1

2.	Parking	GEN 4.1 - 1
3.	Passengers Service	GEN 4.1 - 2
4.	Security	GEN 4.1 - 2
5.	Noise-related items	GEN 4.1 - 2
6.	Other	GEN 4.1 - 3
7.	Exemptions and Reductions	GEN 4.1 - 4
8.	Special Rates for Training Aircraft	GEN 4.1 - 5
9.	Method of Payments	GEN 4.1 - 5
GEN 4.2	AIR NAVIGATION SERVICE CHARGES	GEN 4.2 - 1
1.	Route Air Navigation Services Charges	GEN 4.2 - 1
2.	Cost Basis for Air Navigation Services and Exemptions/reductions	GEN 4.2 - 2
3.	Methods of Payment	GEN 4.2 - 2
4.	Information	GEN 4.2 - 2

GEN 2 TABLES AND CODES**GEN 2.1 MEASURING SYSTEM, AIRCRAFT MARKINGS, HOLIDAYS****1. Units of Measurement**

The units of measurement of the international system of units (SI) are officially adopted in Cyprus.

Standard Application of Specific Units of Measurement (ICAO Annex 5)

The application of units of measurement for certain quantities commonly used in international civil aviation air and ground operations shall be in accordance with the following table.

MEASUREMENT OF	UNITS USED
Distance used in navigation, position reporting, etc, - generally in excess of 2 nautical miles	Nautical Miles and tenths
Relatively short distances such as those relating to aerodromes (e.g. runway lengths)	Metres
Altitudes, elevations and heights	Feet
Horizontal speed including wind speed	Knots
Vertical speed	Feet per minute
Wind direction for landing and taking off	Degrees Magnetic
Wind direction except for landing and taking off	Degrees True
Visibility including runway visual range	Kilometres or Metres
Altimeter setting	Hectopascal
Temperature	Degrees Celsius
Weight	Metric tons or Kilograms
Time	Hours and Minutes, the day of 24 hours beginning at midnight UTC

2. Temporal Reference System

2.1 The co-ordinated universal time (UTC) is used in air traffic and communications services.

2.2 In documents published by the AIS, local time (LT) is also used.

2.3 The Cyprus local time is (UTC+2).

2.4 The Summer time corresponds to universal time plus three hours (UTC+3).

2.5 Summer time comes into force on the last Sunday of March.
Summer time ends the last Sunday of October.

3. Geodetic Reference Datum**3.1 Geodetic Undulation**

3.1.1 In the civil aviation field, altitudes and flight levels are defined in terms of atmospheric pressure.

3.1.2 Points on the ground are defined by their planimetric co-ordinates and by their orthometric height or altitude, which use the geoid (corresponding to the Mean Sea Level) as their reference.

3.1.3 The heights derived from GNSS systems use the WGS-84 ellipsoid as their reference and are thus different from the values of the orthometric height at the same point.

3.1.4 The height difference between the ellipsoid (GNSS height reference) and the geoid (orthometric height reference) is called the undulation of the geoid. This value defines the distance of the geoid above (positive undulation of the geoid) or below (negative undulation of the geoid) the reference ellipsoid. This gives the relationship:

Undulation of the Geoid = Ellipsoidal Height - Orthometric Height (Altitude)

3.1.5 The aeronautical information service publishes the value of the undulation of the geoid for each aerodrome. This value is expressed in feet. It shall be shown on the charts where GNSS height references are used.

WARNING: User's attention is drawn towards the fact that the publication of the undulation does not modify the GPS restrictions for use. Particularly, the altitude information given by GPS shall NOT be used.

4. Aircraft Nationality and Registration Marks

4.1 The registration marks for aeroplanes, helicopters, airships and balloons consist of a group of three letters, located after a dash to the right of **5B**.

5. Public Holidays

The following **general public holidays** apply in Cyprus

NEW YEARS DAY	01-01
EPIPHANY DAY	06-01
GREEN MONDAY	07-03
GREEK NATIONAL DAY	25-03
NATIONAL ANNIVERSARY DAY	01-04
EASTER FRIDAY	22-04
EASTER MONDAY	25-04
LABOUR DAY	01-05
WHIT MONDAY	13-06
FEAST OF THE ASSUMPTION	15-08
DAY OF THE INDEPENDENCE	01-10
GREEK NATIONAL DAY	28-10
DAY OF CHRISTMAS EVE	24-12
CHRISTMAS DAY	25-12
BOXING DAY	26-12

Title of series	Scale	Chart name	Sheet number	Edition Date
INSTRUMENT APPROACH AND LANDING CHART - ICAO		LARNAKA:		
	1:350 000	ILS/VOR S RWY 22	AD 2.LCLK 2.24.2.1	15 JUL 21
		ILS/VOR X RWY 22	AD 2.LCLK 2.24.2.2	22 APR 21
		ILS/VOR Y RWY 22	AD 2.LCLK 2.24.2.3	22 APR 21
		RNP RWY 22	AD 2.LCLK 2.24.2.4	15 JUL 21
		VOR/DME S RWY 22	AD 2.LCLK 2.24.2.5	15 JUL 21
		VOR/DME X RWY 22	AD 2.LCLK 2.24.2.6	15 JUL 21
		VOR/DME Y RWY 22	AD 2.LCLK 2.24.2.7	15 JUL 21
		VOR/DME S RWY 04	AD 2.LCLK 2.24.2.8	15 JUL 21
		VOR/DME X RWY 04	AD 2.LCLK 2.24.2.9	22 APR 21
		VOR/DME Z RWY 04	AD 2.LCLK 2.24.2.10	22 APR 21
		RNP RWY 04	AD 2.LCLK 2.24.2.11	15 JUL 21
	1:250 000	BOSIS RNP TO ILS-P (GNSS) RWY 22	AD 2.LCLK 2.24.2.12	15 JUL 21
		SOBOS RNP TO ILS-P (GNSS) RWY 22	AD 2.LCLK 2.24.2.13	22 APR 21
		PAFOS:		
	1:350 000	VOR/DME S RWY 11	AD 2.LCPH 2.24.2.1	07 OCT 21
		VOR/DME X RWY 11	AD 2.LCPH 2.24.2.2	07 OCT 21
		VOR/DME Z RWY 11	AD 2.LCPH 2.24.2.8	07 OCT 21
		RNP RWY 11	AD 2.LCPH 2.24.2.5	02 DEC 21
		RNP RWY 29	AD 2.LCPH 2.24.2.13	02 DEC 21
	1:250 000	VOR/DME X RWY 29	AD 2.LCPH 2.24.2.3	07 OCT 21
		ILS/VOR X RWY 29	AD 2.LCPH 2.24.2.4	02 DEC 21
		ILS/VOR Y RWY 29	AD 2.LCPH 2.24.2.6	07 OCT 21
VOR/DME Y RWY 29		AD 2.LCPH 2.24.2.7	07 OCT 21	
ESERI RNP TO ILS-P (GNSS) RWY 29		AD 2.LCPH 2.24.2.9	07 OCT 21	
GIPRO RNP TO ILS-P (GNSS) RWY 29		AD 2.LCPH 2.24.2.10	07 OCT 21	
NORDI RNP TO ILS-P (GNSS) RWY 29		AD 2.LCPH 2.24.2.11	07 OCT 21	
TOBAL RNP TO ILS-P (GNSS) RWY 29		AD 2.LCPH 2.24.2.12	07 OCT 21	
STANDARD ARRIVAL CHART INSTRUMENT (STAR) - ICAO	1:600 000	LARNAKA:		
		RWY 22	AD 2.LCLK 2.24.3.1	15 JUL 21
		RWY 04	AD 2.LCLK 2.24.3.2	15 JUL 21
		RNAV (GNSS) RWY 22	AD 2 LCLK 2.24.3.3	15 JUL 21
		RNAV (GNSS) RWY 04	AD 2 LCLK 2.24.3.4	15 JUL 21
	1:500 000	PAFOS:		
		RWY 11/29	AD 2.LCPH 2.24.3.1	07 OCT 21
		RNAV RWY 11/29	AD 2.LCPH 2.24.3.2	07 OCT 21

Title of series	Scale	Chart name	Sheet number	Edition Date
STANDARD DEPARTURE INSTRUMENT CHART (SID) - ICAO	1:500 000	LARNAKA:		
		RWY 22 WESTBOUND	AD 2.LCLK 2.24.4.1	22 APR 21
	1:600 000	RWY 04 EASTBOUND	AD 2.LCLK 2.24.4.2	22 APR 21
		RWY 04 WESTBOUND	AD 2.LCLK 2.24.4.3	22 APR 21
	1:500 000	RNAV (GNSS) RWY 22 EASTBOUND	AD 2.LCLK 2.24.4.4	22 APR 21
		RNAV (GNSS) RWY 22 WESTBOUND	AD 2 LCLK 2.24.4.5	22 APR 21
	1:600 000	RNAV (GNSS) RWY 04 EASTBOUND	AD 2 LCLK 2.24.4.6	22 APR 21
		RNAV (GNSS) RWY 04 WESTBOUND	AD 2 LCLK 2.24.4.7	22 APR 21
	1:500 000	PAFOS:		
		RWY 11	AD 2.LCPH 2.24.4.1	07 OCT 21
		RWY 29	AD 2.LCPH 2.24.4.2	07 OCT 21
		RNAV (GNSS) RWY 11	AD 2.LCPH 2.24.4.3	02 DEC 21
		RNAV (GNSS) RWY 29	AD 2.LCPH 2.24.4.4	02 DEC 21
VISUAL APPROACH CHART (VAC) - ICAO	1:250 000	LARNAKA:		
		ADLAS RNAV TO VISUAL(GNSS) RWY 22	AD 2 LCLK 2.24.5.1	22 APR 21
		PAFOS:		
		ESERI RNAV (GNSS) RWY 29	AD 2 LCPH 2.24.5.1	07 OCT 21
		TOBAL RNAV (GNSS) RWY 29	AD 2 LCPH 2.24.5.2	07 OCT 21
ATC SURVEILLANCE MINIMUM ALTITUDE CHART - ICAO	1:500 000	LARNAKA:		
		ATC SURVEILLANCE MINIMUM ALTITUDE	AD 2 LCLK 2.24.6.1	30 DEC 21
EN ROUTE CHART	1:1 000 000	NICOSIA FIR ATS ROUTES	ENR 6.1-1	13 AUG 20
		NICOSIA FIR RNAV ROUTES	ENR 6.1-3	13 AUG 20
		PROHIBITED, RESTRICTED AND DANGER AREAS	ENR 6.2	05 NOV 20
		TEMPORARY SEGREGATED AND TEMPORARY RESERVED AREAS	ENR 6.2.1	01 FEB 18

6. TOPOGRAPHICAL CHARTS

6.1 To supplement the aeronautical charts, a wide range of topographical charts are available from:

Post: Ministry of Interior
Director of Lands and Surveys
Agiou Nikolaou 41 - 49
Nemeli Court Block A 1st floor
Egkomi 2408
Nicosia

Phone: +357 22408709
Fax: +357 22408789
Email: director@dls.moi.gov.cy

ENR 0.6 TABLE OF CONTENTS TO PART 2

ENR 0

ENR 0.1	PREFACE	ENR 0.1 - 1
ENR 0.2	RECORD OF AIP AMENDMENTS	ENR 0.2 - 1
ENR 0.3	RECORD OF AIP SUPPLEMENTS	ENR 0.3 - 1
ENR 0.4	CHECKLIST OF AIP PAGES	ENR 0.4 - 1
ENR 0.5	LIST OF HAND AMENDMENTS TO THE AIP	ENR 0.5 - 1
ENR 0.6	TABLE OF CONTENTS TO PART 2	ENR 0.6 - 1

ENR 1 GENERAL RULES AND PROCEDURES

ENR 1.1	GENERAL RULES	ENR 1.1 - 1
1.	General	ENR 1.1 - 1
2.	Compliance with the rules of the air (SERA.2005)	ENR 1.1 - 1
3.	Responsibilities (SERA.2010).....	ENR 1.1 - 1
4.	Authority of pilot-in-command of an aircraft (SERA.2015).....	ENR 1.1 - 1
5.	Problematic use of psychoactive substances (SERA.2020).....	ENR 1.1 - 2
6.	Negligent or reckless operation of aircraft (SERA.3101)	ENR 1.1 - 2
7.	Minimum heights (SERA.3105)	ENR 1.1 - 2
8.	Cruising levels (SERA.3110)	ENR 1.1 - 2
9.	Towing (SERA.3120).....	ENR 1.1 - 2
10.	Parachute descents (SERA.3125).....	ENR 1.1 - 2
11.	Aerobatic flight (SERA.3130).....	ENR 1.1 - 2
12.	Formation flights (SERA.3135).....	ENR 1.1 - 3
13.	Unmanned free balloons (SERA.3140)	ENR 1.1 - 3
14.	Unmanned aircraft (drones).....	ENR 1.1 - 7
15.	Prohibited areas and restricted areas (SERA.3145).....	ENR 1.1 - 7
16.	Avoidance of Collisions.....	ENR 1.1 - 8
17.	Signals	ENR 1.1 - 11
ENR 1.2	VISUAL FLIGHT RULES	ENR 1.2 - 1
1.	VMC visibility and distance from cloud minima (SERA.5001)	ENR 1.2 - 1
2.	ATC Service to VFR Traffic and Restrictions.....	ENR 1.2 - 1
3.	Visual flight rules (SERA.5005)	ENR 1.2 - 1
4.	Special VFR in control zones (SERA.5010)	ENR 1.2 - 3
5.	Regional additions	ENR 1.2 - 4
ENR 1.3	INSTRUMENT FLIGHT RULES	ENR 1.3 - 1
1.	Instrument flight rules (IFR) - Rules Applicable to All IFR Flights (SERA.5015).....	ENR 1.3 - 1
2.	IFR - Rules Applicable to IFR Flights within Controlled Airspace (SERA.5020).....	ENR 1.3 - 1
3.	IFR - Rules Applicable to IFR Flights outside Controlled Airspace (SERA.5025)	ENR 1.3 - 1
ENR 1.4	ATS AIRSPACE CLASSIFICATION	ENR 1.4 - 1
1.	Classification of Airspace.....	ENR 1.4 - 1
2.	TABLE 1: ATS Airspace Classification	ENR 1.4 - 2
ENR 1.5	HOLDING, APPROACH AND DEPARTURE PROCEDURE	ENR 1.5 - 1
1.	General	ENR 1.5 - 1
2.	Arriving Flights.....	ENR 1.5 - 2
3.	Departing Flights.....	ENR 1.5 - 2
4.	Other Relevant Information and Procedures	ENR 1.5 - 2

ENR 1.6	RADAR SERVICES AND PROCEDURES	ENR 1.6 - 1
1.	Primary Radar	ENR 1.6 - 1
2.	Secondary Surveillance Radar (SSR)	ENR 1.6 - 4
ENR 1.7	ALTIMETER SETTING PROCEDURES	ENR 1.7 - 1
1.	Introduction	ENR 1.7 - 1
2.	Basic Altimeter Setting Procedures	ENR 1.7 - 1
3.	Procedures Applicable to Operators and Pilots	ENR 1.7 - 3
4.	Tables of Cruising Levels	ENR 1.7 - 4
ENR 1.8	REGIONAL SUPPLEMENTARY PROCEDURES (Doc 7030)	ENR 1.8 - 1
1.	8.33 KHz Channel Spacing Exemptions	ENR 1.8 - 1
2.	Reduced Vertical Separation Minimum in Nicosia FIR	ENR 1.8 - 1
ENR 1.9	AIR TRAFFIC FLOW MANAGEMENT AND AIRSPACE MANAGEMENT	ENR 1.9 - 1
1.	Air Traffic Flow Management Structure, Services Provided, Location of Units and Hours of Operation	ENR 1.9 - 1
2.	ATFM Documentation	ENR 1.9 - 1
3.	Exemptions from ATFCM Slot Allocation	ENR 1.9 - 1
4.	Flexible Use of Airspace in Cyprus	ENR 1.9 - 2
ENR 1.10	FLIGHT PLANNING	ENR 1.10 - 1
1.	Submission of Flight Plan (SERA.4001)	ENR 1.10 - 1
2.	Contents of a Flight Plan (SERA.4005)	ENR 1.10 - 4
3.	Changes to a Flight Plan (SERA.4015)	ENR 1.10 - 6
4.	Adherence to Flight Plan (SERA.8020)	ENR 1.10 - 6
5.	Flight Plan Filing	ENR 1.10 - 7
6.	Closing a Flight Plan (SERA.4020)	ENR 1.10 - 10
7.	Flight Plan Form	ENR 1.10 - 12
ENR 1.11	ADDRESSING OF FLIGHT PLAN MESSAGES	ENR 1.11 - 1
ENR 1.12	INTERCEPTION OF CIVIL AIRCRAFT	ENR 1.12 - 1
1.	General Principles to be Observed	ENR 1.12 - 1
2.	Interception (SERA.11015)	ENR 1.12 - 1
ENR 1.13	UNLAWFUL INTERFERENCE	ENR 1.13 - 1
1.	Unlawful Interference (SERA 11001)	ENR 1.13 - 1
2.	Service to aircraft in the event of an emergency (SERA.11005)	ENR 1.13 - 1
3.	In-flight Contingencies (SERA.11010)	ENR 1.13 - 1
4.	Regional Additions	ENR 1.13 - 2
ENR 1.14	AIR TRAFFIC ACCIDENTS AND INCIDENTS	ENR 1.14 - 1
1.	Definition of Air Traffic Incidents	ENR 1.14 - 1
2.	Air Traffic Incidents are Designated and Identified in Reports as Follows:	ENR 1.14 - 1
3.	Use of the Air Traffic Incident Report Form (See Model)	ENR 1.14 - 1
4.	Reporting Procedures (Including In-flight Procedures)	ENR 1.14 - 2
5.	Aircraft Accident and Incident Investigation Board (AAIIB)	ENR 1.14 - 3
6.	Purpose of Reporting and Handling of the Form	ENR 1.14 - 3
7.	Instructions for the Completion of the Air Traffic Incident Report Form	ENR 1.14 - 9
ENR 2	AIR TRAFFIC SERVICES AIRSPACE	
ENR 2.1	FIR, UIR, TMA and CTA	ENR 2.1 - 1
ENR 2.2	OTHER REGULATED AIRSPACE	ENR 2.2 - 1
ENR 3	ATS ROUTES	

ENR 3.1	LOWER ATS ROUTES	ENR 3.1 - 1
ENR 3.2	UPPER ATS ROUTES	ENR 3.2 - 1
ENR 3.3	AREA NAVIGATION (RNAV) ROUTES	ENR 3.3 - 1
ENR 3.4	HELICOPTER ROUTES	ENR 3.4 - 1
ENR 3.5	OTHER ROUTES	ENR 3.5 - 1
ENR 3.6	EN-ROUTE HOLDING	ENR 3.6 - 1
ENR 4	RADIO NAVIGATION AIDS/SYSTEMS	
ENR 4.1	RADIO NAVIGATION AIDS - EN-ROUTE	ENR 4.1 - 1
ENR 4.2	SPECIAL NAVIGATION SYSTEMS	ENR 4.2 - 1
ENR 4.3	GLOBAL NAVIGATION SATELLITE SYSTEM (GNSS)	ENR 4.3 - 1
ENR 4.4	NAME-CODE DESIGNATORS FOR SIGNIFICANT POINTS	ENR 4.4 - 1
ENR 4.5	AERONAUTICAL GROUND LIGHTS - EN-ROUTE	ENR 4.5 - 1
ENR 5	NAVIGATION WARNINGS	
ENR 5.1	PROHIBITED, RESTRICTED AND DANGER AREAS	ENR 5.1 - 1
ENR 5.2	MILITARY EXERCISE AND TRAINING AREAS	ENR 5.2 - 1
ENR 5.3	OTHER ACTIVITIES OF A DANGEROUS NATURE AND OTHER POTENTIAL HAZARDS	ENR 5.3 - 1
ENR 5.4	AIR NAVIGATION OBSTACLES - EN-ROUTE-AREA 1	ENR 5.4 - 1
ENR 5.5	AERIAL SPORTING AND RECREATIONAL ACTIVITIES	ENR 5.5 - 1
ENR 5.6	BIRD MIGRATION AND AREAS WITH SENSITIVE FAUNA	ENR 5.6 - 1
ENR 6	EN-ROUTE CHARTS	
ENR 6	LIST OF ENR CHART	ENR 6 - 1
	EN-ROUTE CHART - ICAO ATS ROUTES	ENR 6.1 - 1
	EN-ROUTE CHART - ICAO RNAV ROUTES	ENR 6.1 - 3
	PROHIBITED, RESTRICTED AND DANGER AREAS	ENR 6.2 - 1
	TEMPORARY SEGREGATED AND TEMPORARY RESERVED AREAS	ENR 6.2.1 - 1

THIS PAGE INTENTIONALLY LEFT BLANK

AD 0.6	TABLE OF CONTENTS TO PART 3	
AD 0		
AD 0.1	PREFACE	AD 0.1 - 1
AD 0.2	RECORD OF AIP AMENDMENTS	AD 0.2 - 1
AD 0.3	RECORD OF AIP SUPPLEMENTS	AD 0.3 - 1
AD 0.4	CHECKLIST OF AIP PAGES	AD 0.4 - 1
AD 0.5	LIST OF HAND AMENDMENTS TO THE AIP	AD 0.5 - 1
AD 0.6	TABLE OF CONTENTS TO PART 3	AD 0.6 - 1
AD 1	AERODROMES/HELIPORTS - INTRODUCTION	
AD 1.1	AERODROME/HELIPORT AVAILABILITY	AD 1.1 - 1
1.	General Conditions Under Which Aerodromes and Associated Facilities are Available for use ..	AD 1.1 - 1
2.	Applicable ICAO Documents	AD 1.1 - 2
3.	Civil use of Military Air Bases	AD 1.1 - 2
4.	CAT II Operations at Aerodromes	AD 1.1 - 2
5.	Friction Measuring Device used and Friction Level Below which RWY is Declared Slippery when wet.....	AD 1.1 - 3
6.	Other Information.....	AD 1.1 - 3
AD 1.2	RESCUE AND FIRE FIGHTING SERVICES AND SNOW PLAN	AD 1.2 - 1
1.	Rescue and Fire Fighting Services	AD 1.2 - 1
2.	Snowplan.....	AD 1.2 - 1
AD 1.3	INDEX TO AERODROMES AND HELIPORTS	AD 1.3 - 1
AD 1.4	GROUPING OF AERODROMES	AD 1.4 - 1
1.	International Aerodromes	AD 1.4 - 1
2.	Military Aerodromes.....	AD 1.4 - 1
AD 1.5	STATUS OF CERTIFICATION OF AERODROMES	AD 1.5 - 1
AD 2	AERODROMES	
LCLK - LARNAKA INTERNATIONAL		AD 2.LCLK - 1
LCLK AD 2.1	AERODROME LOCATION INDICATOR AND NAME	AD 2.LCLK - 1
LCLK AD 2.2	AERODROME GEOGRAPHICAL AND ADMINISTRATIVE DATA	AD 2.LCLK - 1
LCLK AD 2.3	OPERATIONAL HOURS	AD 2.LCLK - 1
LCLK AD 2.4	HANDLING SERVICES AND FACILITIES	AD 2.LCLK - 2
LCLK AD 2.5	PASSENGER FACILITIES	AD 2.LCLK - 2
LCLK AD 2.6	RESCUE AND FIRE FIGHTING SERVICES	AD 2.LCLK - 3
LCLK AD 2.7	SEASONAL AVAILABILITY - CLEARING	AD 2.LCLK - 3
LCLK AD 2.8	APRONS,TAXIWAYS AND CHECK LOCATIONS DATA	AD 2.LCLK - 4
LCLK AD 2.9	SURFACE MOVEMENT GUIDANCE AND CONTROL SYSTEM AND MARKINGS	AD 2.LCLK - 6
LCLK AD 2.10	AERODROME OBSTACLES	AD 2.LCLK - 6
LCLK AD 2.11	METEOROLOGICAL INFORMATION PROVIDED	AD 2.LCLK - 7
LCLK AD 2.12	RUNWAY PHYSICAL CHARACTERISTICS	AD 2.LCLK - 8
LCLK AD 2.13	DECLARED DISTANCES	AD 2.LCLK - 9

LCLK AD 2.14	APPROACH AND RUNWAY LIGHTING	AD 2.LCLK - 10
LCLK AD 2.15	OTHER LIGHTING, SECONDARY POWER SUPPLY	AD 2.LCLK - 10
LCLK AD 2.16	HELICOPTER LANDING AREA	AD 2.LCLK - 10
LCLK AD 2.17	ATS AIRSPACE	AD 2.LCLK - 11
LCLK AD 2.18	ATS COMMUNICATION FACILITIES	AD 2.LCLK - 11
LCLK AD 2.19	RADIO NAVIGATION AND LANDING AIDS	AD 2.LCLK - 12
LCLK AD 2.20	LOCAL TRAFFIC REGULATIONS	AD 2.LCLK - 12
1.	Ground movement	AD 2.LCLK - 12
2.	Contingencies	AD 2.LCLK - 16
3.	Unfamiliar taxi route	AD 2.LCLK - 16
4.	Runway holding positions	AD 2.LCLK - 17
5.	Minimum runway occupancy	AD 2.LCLK - 17
6.	Runway system	AD 2.LCLK - 17
LCLK AD 2.21	NOISE ABATEMENT PROCEDURES	AD 2.LCLK - 17
LCLK AD 2.22	FLIGHT PROCEDURES	AD 2.LCLK - 17
1.	Local Flying Restrictions	AD 2.LCLK - 17
2.	Low Visibility Procedures	AD 2.LCLK - 17
LCLK AD 2.23	ADDITIONAL INFORMATION	AD 2.LCLK - 17
1.	Bird concentrations in the vicinity of the airport	AD 2.LCLK - 17
2.	Laser interference	AD 2.LCLK - 18
LCLK AD 2.24	CHARTS RELATED TO AN AERODROME	AD 2.LCLK - 18
	AERODROME CHART - ICAO	AD 2.LCLK 2.24.1.1 - 1
	AIRCRAFT PARKING/DOCKING CHART - ICAO APRON 1	AD 2.LCLK 2.24.1.2 - 1
	AIRCRAFT PARKING/DOCKING CHART - ICAO APRON 2	AD 2.LCLK 2.24.1.3 - 1
	AERODROME GROUND MOVEMENT CHART - ICAO	AD 2.LCLK 2.24.1.4 - 1
	AERODROME OBSTACLE CHART - ICAO TYPE A	AD 2.LCLK 2.24.1.5 - 1
	IAC ILS/VOR S RWY 22 - ICAO	AD 2.LCLK 2.24.2.1 - 1
	IAC ILS/VOR X RWY 22 - ICAO	AD 2.LCLK 2.24.2.2 - 1
	IAC ILS/VOR Y RWY 22 - ICAO	AD 2.LCLK 2.24.2.3 - 1
	IAC RNP RWY 22 - ICAO	AD 2.LCLK 2.24.2.4 - 1
	IAC VOR/DME S RWY 22 - ICAO	AD 2.LCLK 2.24.2.5 - 1
	IAC VOR/DME X RWY 22 - ICAO	AD 2.LCLK 2.24.2.6 - 1
	IAC VOR/DME Y RWY 22 - ICAO	AD 2.LCLK 2.24.2.7 - 1
	IAC VOR/DME S RWY 04 - ICAO	AD 2.LCLK 2.24.2.8 - 1
	IAC VOR/DME X RWY 04 - ICAO	AD 2.LCLK 2.24.2.9 - 1
	IAC VOR/DME Z RWY 04 - ICAO	AD 2.LCLK 2.24.2.10 - 1
	IAC RNP RWY 04 - ICAO	AD 2.LCLK 2.24.2.11 - 1
	IAC BOSIS RNP TO ILS-P (GNSS) RWY 22 - ICAO	AD 2.LCLK 2.24.2.12 - 1
	IAC SOBOS RNP TO ILS-P (GNSS) RWY 22 - ICAO	AD 2.LCLK 2.24.2.13 - 1
	STAR RWY 22 - ICAO	AD 2.LCLK 2.24.3.1 - 1
	STAR RWY 04 - ICAO	AD 2.LCLK 2.24.3.2 - 1
	STAR RNAV (GNSS) RWY 22 - ICAO	AD 2.LCLK 2.24.3.3 - 1
	STAR RNAV (GNSS) RWY 04 - ICAO	AD 2.LCLK 2.24.3.4 - 1

	SID RWY 22 WESTBOUND - ICAO	AD 2.LCLK 2.24.4.1 - 1
	SID RWY 04 EASTBOUND - ICAO	AD 2.LCLK 2.24.4.2 - 1
	SID RWY 04 WESTBOUND - ICAO	AD 2.LCLK 2.24.4.3 - 1
	SID RNAV (GNSS) RWY 22 EASTBOUND - ICAO	AD 2.LCLK 2.24.4.4 - 1
	SID RNAV (GNSS) RWY 22 WESTBOUND - ICAO	AD 2.LCLK 2.24.4.5 - 1
	SID RNAV (GNSS) RWY 04 EASTBOUND - ICAO	AD 2.LCLK 2.24.4.6 - 1
	SID RNAV (GNSS) RWY 04 WESTBOUND - ICAO	AD 2.LCLK 2.24.4.7 - 1
	VAC RNAV TO VISUAL RWY 22 - ICAO	AD 2.LCLK 2.24.5.1 - 1
LCPH - PAFOS INTERNATIONAL		AD 2.LCPH - 1
LCPH AD 2.1 AERODROME LOCATION INDICATOR AND NAME		AD 2.LCPH - 1
LCPH AD 2.2 AERODROME GEOGRAPHICAL AND ADMINISTRATIVE DATA		AD 2.LCPH - 1
LCPH AD 2.3 OPERATIONAL HOURS		AD 2.LCPH - 1
LCPH AD 2.4 HANDLING SERVICES AND FACILITIES		AD 2.LCPH - 2
LCPH AD 2.5 PASSENGER FACILITIES		AD 2.LCPH - 2
LCPH AD 2.6 RESCUE AND FIRE FIGHTING SERVICES		AD 2.LCPH - 3
LCPH AD 2.7 SEASONAL AVAILABILITY - CLEARING		AD 2.LCPH - 3
LCPH AD 2.8 APRONS, TAXIWAYS AND CHECK LOCATIONS DATA		AD 2.LCPH - 3
LCPH AD 2.9 SURFACE MOVEMENT GUIDANCE AND CONTROL SYSTEM AND MARKINGS.....		AD 2.LCPH - 5
LCPH AD 2.10 AERODROME OBSTACLES		AD 2.LCPH - 5
LCPH AD 2.11 METEOROLOGICAL INFORMATION PROVIDED		AD 2.LCPH - 5
LCPH AD 2.12 RUNWAY PHYSICAL CHARACTERISTICS		AD 2.LCPH - 6
LCPH AD 2.13 DECLARED DISTANCES		AD 2.LCPH - 6
LCPH AD 2.14 APPROACH AND RUNWAY LIGHTING		AD 2.LCPH - 7
LCPH AD 2.15 OTHER LIGHTING, SECONDARY POWER SUPPLY		AD 2.LCPH - 7
LCPH AD 2.16 HELICOPTER LANDING AREA		AD 2.LCPH - 7
LCPH AD 2.17 ATS AIRSPACE		AD 2.LCPH - 8
LCPH AD 2.18 ATS COMMUNICATION FACILITIES		AD 2.LCPH - 8
LCPH AD 2.19 RADIO NAVIGATION AND LANDING AIDS		AD 2.LCPH - 9
LCPH AD 2.20 LOCAL TRAFFIC REGULATIONS		AD 2.LCPH - 10
1. Taxiing to and from Stands.....		AD 2.LCPH - 10
2. Local Flying Restrictions.....		AD 2.LCPH - 11
3. Circuit Altitude.....		AD 2.LCPH - 11
LCPH AD 2.21 NOISE ABATEMENT PROCEDURES		AD 2.LCPH - 11
LCPH AD 2.22 FLIGHT PROCEDURES		AD 2.LCPH - 11
1. Low Visibility Procedures.....		AD 2.LCPH - 11
LCPH AD 2.23 ADDITIONAL INFORMATION		AD 2.LCPH - 11
1. Bird concentrations in the vicinity of the airport		AD 2.LCPH - 11
LCPH AD 2.24 CHARTS RELATED TO AN AERODROME		AD 2.LCPH - 12
AERODROME CHART - ICAO		AD 2.LCPH 2.24.1.1 - 1
AIRCRAFT PARKING/DOCKING CHART - ICAO.....		AD 2.LCPH 2.24.1.2 - 1
AERODROME GROUND MOVEMENT CHART - ICAO		AD 2.LCPH 2.24.1.3 - 1

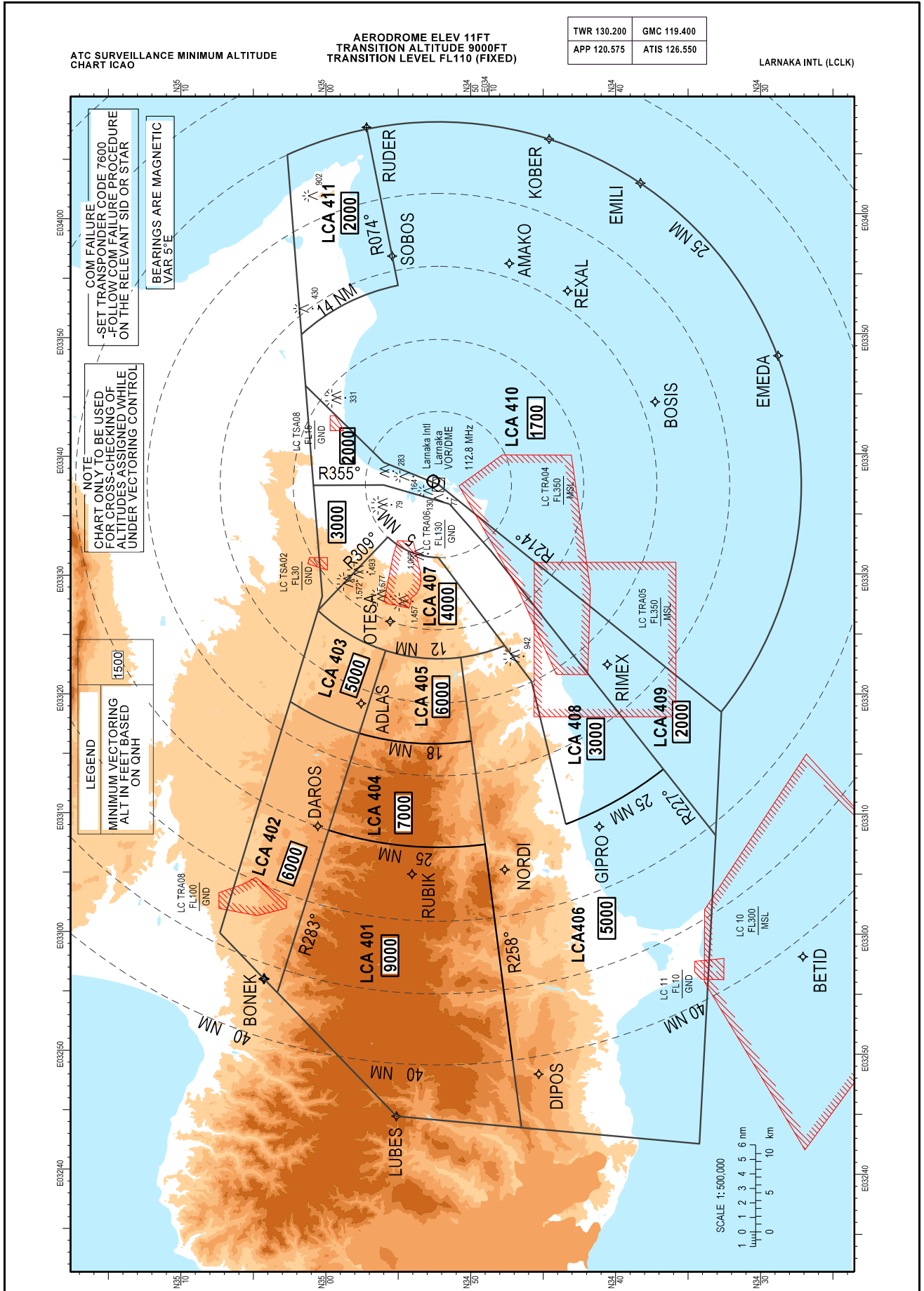
AERODROME OBSTACLE CHART - ICAO TYPE A	AD 2.LCPH 2.24.4 - 1
IAC VOR/DME S RWY 11 - ICAO	AD 2.LCPH 2.24.2.1 - 1
IAC VOR/DME X RWY 11 - ICAO	AD 2.LCPH 2.24.2.2 - 1
IAC VOR/DME X RWY 29 - ICAO	AD 2.LCPH 2.24.2.3 - 1
IAC ILS/VOR X RWY 29 - ICAO	AD 2.LCPH 2.24.2.4 - 1
IAC ILS/NDB (L) RWY 29 - ICAO	AD 2.LCPH 2.24.2.5 - 1
IAC ILS VOR Y RWY 29	AD 2.LCPH 2.24.2.6 - 1
IAC VOR DME Y RWY 29	AD 2.LCPH 2.24.2.7 - 1
IAC VOR DME Z RWY 11	AD 2.LCPH 2.24.2.8 - 1
IAC ESERI RNP TO ILS P (GNSS) RWY 29	AD 2.LCPH 2.24.2.9 - 1
IAC GIPRO RNP TO ILS P (GNSS) RWY 29	AD 2.LCPH 2.24.2.10 - 1
IAC NORDI RNP TO ILS P (GNSS) RWY 29	AD 2.LCPH 2.24.2.11 - 1
IAC TOBAL RNP TO ILS P (GNSS) RWY 29	AD 2.LCPH 2.24.2.12 - 1
STAR RWY 11/29 - ICAO	AD 2.LCPH 2.24.3.1 - 1
SID RWY 11 - ICAO	AD 2.LCPH 2.24.4.1 - 1
SID RWY 29 - ICAO	AD 2.LCPH 2.24.4.2 - 1
SID RNAV (GNSS) RWY 11 - ICAO	AD 2.LCPH 2.24.4.3 - 1
SID RNAV (GNSS) RWY 29 - ICAO	AD 2.LCPH 2.24.4.4 - 1
VAC ESERI RNAV(GNSS) RWY29	AD 2.LCPH 2.24.5.1 - 1
VAC TOBAL RNAV (GNSS) RWY 29	AD 2.LCPH 2.24.5.2 - 1
LCNC - NICOSIA INTERNATIONAL	AD 2.LCNC - 1
LCNC AD 2.1 AERODROME LOCATION INDICATOR AND NAME	AD 2.LCNC - 1
LCNC AD 2.2 AERODROME GEOGRAPHICAL AND ADMINISTRATIVE DATA	AD 2.LCNC - 1
LCNC AD 2.3 OTHER INFORMATION	AD 2.LCNC - 1
LCNC AD 2.4 HANDLING SERVICES AND FACILITIES	AD 2.LCNC - 1
LCNC AD 2.5 PASSENGER FACILITIES	AD 2.LCNC - 1
LCNC AD 2.6 RESCUE AND FIRE FIGHTING SERVICES	AD 2.LCNC - 1
LCNC AD 2.7 SEASONAL AVAILABILITY - CLEARING	AD 2.LCNC - 1
LCNC AD 2.8 APRONS,TAXIWAYS AND CHECK LOCATIONS DATA	AD 2.LCNC - 1
LCNC AD 2.9 SURFACE MOVEMENT GUIDANCE AND CONTROL SYSTEM AND MARKINGS	AD 2.LCNC - 1
LCNC AD 2.10 AERODROME OBSTACLES	AD 2.LCNC - 1
LCNC AD 2.11 METEOROLOGICAL INFORMATION PROVIDED	AD 2.LCNC - 2
LCNC AD 2.12 RUNWAY PHYSICAL CHARACTERISTICS	AD 2.LCNC - 2
LCNC AD 2.13 DECLARED DISTANCES	AD 2.LCNC - 2
LCNC AD 2.14 APPROACH AND RUNWAY LIGHTING	AD 2.LCNC - 2
LCNC AD 2.15 OTHER LIGHTING, SECONDARY POWER SUPPLY	AD 2.LCNC - 2
LCNC AD 2.16 HELICOPTER LANDING AREA	AD 2.LCNC - 2
LCNC AD 2.17 ATS AIRSPACE	AD 2.LCNC - 2
LCNC AD 2.18 ATS COMMUNICATION FACILITIES	AD 2.LCNC - 2
LCNC AD 2.19 RADIO NAVIGATION AND LANDING AIDS	AD 2.LCNC - 2
LCNC AD 2.20 LOCAL TRAFFIC REGULATIONS	AD 2.LCNC - 2

LCNC AD 2.21	NOISE ABATEMENT PROCEDURES	AD 2.LCNC - 2
LCNC AD 2.22	FLIGHT PROCEDURES	AD 2.LCNC - 2
LCNC AD 2.23	ADDITIONAL INFORMATION	AD 2.LCNC - 2
LCNC AD 2.24	CHARTS RELATED TO AN AERODROME	AD 2.LCNC - 2
LCRA - AKROTIRI MILITARY		AD 2.LCRA - 1
LCRA AD 2.1	AERODROME LOCATION INDICATOR AND NAME	AD 2.LCRA - 1
LCRA AD 2.2	AERODROME GEOGRAPHICAL AND ADMINISTRATIVE DATA	AD 2.LCRA - 1
LCRA AD 2.3	OPERATIONAL HOURS	AD 2.LCRA - 1
LCRA AD 2.4	HANDLING SERVICES AND FACILITIES	AD 2.LCRA - 1
LCRA AD 2.5	PASSENGER FACILITIES	AD 2.LCRA - 2
LCRA AD 2.6	RESCUE AND FIRE FIGHTING SERVICES	AD 2.LCRA - 2
LCRA AD 2.7	SEASONAL AVAILABILITY - CLEARING	AD 2.LCRA - 2
LCRA AD 2.8	APRONS, TAXIWAYS AND CHECK LOCATIONS DATA	AD 2.LCRA - 2
LCRA AD 2.9	SURFACE MOVEMENT GUIDANCE AND CONTROL SYSTEM AND MARKINGS	AD 2.LCRA - 2
LCRA AD 2.10	AERODROME OBSTACLES	AD 2.LCRA - 3
LCRA AD 2.11	METEOROLOGICAL INFORMATION PROVIDED	AD 2.LCRA - 3
LCRA AD 2.12	RUNWAY PHYSICAL CHARACTERISTICS	AD 2.LCRA - 3
LCRA AD 2.13	DECLARED DISTANCES	AD 2.LCRA - 4
LCRA AD 2.14	APPROACH AND RUNWAY LIGHTING	AD 2.LCRA - 4
LCRA AD 2.15	OTHER LIGHTING, SECONDARY POWER SUPPLY	AD 2.LCRA - 4
LCRA AD 2.16	HELICOPTER LANDING AREA	AD 2.LCRA - 4
LCRA AD 2.17	ATS AIRSPACE	AD 2.LCRA - 4
LCRA AD 2.18	ATS COMMUNICATION FACILITIES	AD 2.LCRA - 5
LCRA AD 2.19	RADIO NAVIGATION AND LANDING AIDS	AD 2.LCRA - 5
LCRA AD 2.20	LOCAL TRAFFIC REGULATIONS	AD 2.LCRA - 5
LCRA AD 2.21	NOISE ABATEMENT PROCEDURES	AD 2.LCRA - 5
LCRA AD 2.22	FLIGHT PROCEDURES	AD 2.LCRA - 5
LCRA AD 2.23	ADDITIONAL INFORMATION	AD 2.LCRA - 5
LCRA AD 2.24	CHARTS RELATED TO AN AERODROME	AD 2.LCRA - 5

THIS PAGE INTENTIONALLY LEFT BLANK

Name	Page
SID RNAV (GNSS) RWY 04 WESTBOUND	AD 2 LCLK 2.24.4.7
Visual Approach Chart (VAC) - ICAO	
VAC RNAV (GNSS) RWY 22	AD 2 LCLK 2.24.5.1
ATC Surveillance Minimum Altitude Chart - ICAO	
ATC SURVEILLANCE MINIMUM ALTITUDE	AD 2 LCLK 2.24.6.1

THIS PAGE INTENTIONALLY LEFT BLANK



Name Lateral limits
<p>1. AREA LCA401 MINIMUM ALTITUDE OF 9000 FT DEFINED FROM POINT 350329N 0325457E - 345512N 0324436E - 344634N 0324343E THEN LCA VOR RADIAL 258 TO 344910N 0330725E THEN CLOCKWISE ARC RADIUS 25 NM CENTERED ON LCA VOR TO 345958N 0330834E THEN LCA VOR RADIAL 283 TO 350329N 0325457E</p>
<p>2. AREA LCA402 MINIMUM ALTITUDE OF 6000 FT DEFINED FROM POINT 350727N 0325956E - 350329N 0325457E THEN LCA VOR RADIAL 283 TO 345751N 0331641E THEN CLOCKWISE ARC RADIUS 18 NM CENTERED ON LCA VOR TO 350235N 0331929E - 350727N 0325956E</p>
<p>3. AREA LCA403 MINIMUM ALTITUDE OF 5000 FT DEFINED FROM POINT 345751N 0331641E THEN CLOCKWISE ARC RADIUS 18 NM CENTERED ON LCA VOR TO 350235N 0331929E - 350042N 0332701E THEN ANTICLOCKWISE ARC RADIUS 12 NM CENTERED ON LCA VOR TO 345602N 0332338E THEN LCA VOR RADIAL 283 TO 345751N 0331641E</p>
<p>4. AREA LCA404 MINIMUM ALTITUDE OF 7000 FT DEFINED FROM POINT 345958N 0330834E THEN ANTICLOCKWISE ARC RADIUS 25 NM CENTERED ON LCA VOR TO 344910N 0330725E THEN TO 345005N 0331550E (LCA VOR RADIAL 258) THEN CLOCKWISE ARC RADIUS 18 NM CENTERED ON LCA VOR TO 345751N 0331641E THEN TO 345958N 0330834E (LCA VOR RADIAL 283)</p>
<p>5. AREA LCA405 MINIMUM ALTITUDE OF 6000 FT DEFINED FROM POINT 345005N 0331550E THEN CLOCKWISE ARC RADIUS 18 NM CENTERED ON LCA VOR TO 345751N 0331641E THEN TO 345602N 0332338E (LCA VOR RADIAL 283) THEN ANTICLOCKWISE ARC RADIUS 12 NM CENTERED ON LCA VOR TO 345051N 0332304E THEN LCA VOR RADIAL 258 TO 345005N 0331550E</p>
<p>6. AREA LCA406 MINIMUM ALTITUDE OF 5000 FT DEFINED FROM POINT 344634N 0324343E - 343417N 0324228 E - 343315N 0330812E THEN LCA VOR RADIAL 227 TO 343651N 0331344E THEN CLOCKWISE ARC RADIUS 25 NM CENTERED ON LCA VOR TO 344337N 0330905E - 344558N 0332103E - 344745N 0332404E THEN CLOCKWISE ARC RADIUS 12 NM CENTERED ON LCA VOR TO 345051N 0332304E THEN LCA VOR RADIAL 258 TO 344634N 0324343E</p>
<p>7. AREA LCA407 MINIMUM ALTITUDE OF 4000 FT DEFINED FROM POINT 344745N 0332404E THEN CLOCKWISE ARC RADIUS 12 NM CENTERED ON LCA VOR TO 350042N 0332701E THEN LCA VOR RADIAL 309 TO 345551N 0333309E THEN ANTICLOCKWISE ARC RADIUS 5 NM CENTERED ON LCA VOR TO 345222N 0333127E - 344745N 0332404E</p>
<p>8. AREA LCA408 MINIMUM ALTITUDE OF 3000 FT DEFINED FROM POINT 344337N 0330905E THEN ANTICLOCKWISE ARC RADIUS 25 NM CENTERED ON LCA VOR TO 343651N 0331344E THEN LCA VOR RADIAL 227 TO 344844N 0333156E - 345137N 0333554E - 345609N 0333731E THEN LCA VOR RADIAL 355 TO 350100N 0333730E - 350024N 0332812E - 350042N 0332701E THEN LCA VOR RADIAL 309 TO 345551N 0333309E THEN ANTICLOCKWISE ARC RADIUS 5 NM CENTERED ON LCA VOR TO 345222N 0333127E THEN TO 344558N 0332103E THEN TO 344337N 0330905E</p>
<p>9. AREA LCA409 MINIMUM ALTITUDE OF 2000 FT DEFINED FROM POINT 343315N 0330812E THEN LCA VOR RADIAL 227 TO 344844N 0333156E - 345137N 0333554E - 345609N 0333731E THEN LCA VOR RADIAL 355 TO 350100N 0333730E - 350131N 0334551E - 345609N 0333925E THEN LCA VOR 345222N 0333732E THEN LCA VOR RADIAL 214 TO 343252N 0331830E THEN TO 343315N 0330812E</p>
<p>10. AREA LCA410 MINIMUM ALTITUDE OF 1700 FT DEFINED FROM POINT 350131N 0334551E - 345609N 0333925E THEN LCA VOR 345222N 0333732E THEN LCA VOR RADIAL 214 TO 343252N 0331830E THEN ANTICLOCKWISE ARC RADIUS 25 NM CENTERED ON LCA VOR TO 345712N 0340730E THEN LCA VOR RADIAL 074 TO 345506N 0335414E THEN ANTICLOCKWISE ARC RADIUS 14 NM CENTERED ON LCA VOR TO 350147N 0335010E - 350131N 0334551E</p>
<p>11. AREA LCA411 MINIMUM ALTITUDE OF 2000 FT DEFINED FROM POINT 345712N 0340730E THEN LCA VOR RADIAL 074 TO 345506N 0335414E THEN ANTICLOCKWISE ARC RADIUS 14 NM CENTERED ON LCA VOR TO 350147N 0335010E - 350241N 0340516E THEN CLOCKWISE ARC RADIUS 25NM CENTERED ON LCA VOR TO 345712N 0340730E</p>