



REPUBLIC OF CYPRUS  
**MINISTRY OF TRANSPORT,  
COMMUNICATIONS AND WORKS**



DEPARTMENT OF  
**PUBLIC WORKS**  
1428 LEFKOSIA

LABORATORY SECTOR  
1483 LEFKOSIA

## **EUROPEAN TECHNICAL ASSESMENT UNIT OF LABORATORY SECTOR OF PUBLIC WORK DEPARTMENT**

### **1. General**

The Laboratory Sector of the Public Works Department (LSPWD) is designated as Technical Assessment Body (TAB) by the competent authority, Ministry of Internal, as per the requirements of the Regulation (EC) 305/2011, for the following products' areas:

<b>Products Areas according to Table 1 of Annex IV of Regulation (EC) 305/2011</b>			
<b>N.</b>	<b>Area Code</b>	<b>English Title</b>	<b>Ελληνική Ονομασία</b>
1	1	Precast Normal / Lightweight / Autoclaved Aerated Concrete Products.	Προκατασκευασμένα Προϊόντα από Σύνηθες / Ελαφρύ / Κυψελωτό Αυτόκλειστο Σκυρόδεμα.
2	17	Masonry and Related Products, Masonry Units, Mortars and Ancillaries.	Τοιχοποιία και Συναφή Προϊόντα, Μονάδες Τοιχοποιίας, Κονιάματα, Βοηθητικά Υλικά.
3	23	Road Construction Products.	Προϊόντα Οδοποιίας
4	24	Aggregates	Αδρανή

The Laboratory Sector, in order to be notified as a TAB, has been audited and assessed by the Cyprus Organization for the Promotion of Quality (CYS-CYSAB) to verify its technical competence and its conformity to the requirements of the Regulation (EC) 305/2011.

### **2. Background**

When Cyprus joined the European Union, the Central Laboratory of the Public Works Department had been appointed as a member of the European Organisation of Technical Approvals (EOTA). Members of EOTA were the Approval Bodies, which were designated by the Member States according to article 10 of the European Directive for the Construction Products (CPD/89/106). The Approval Bodies were responsible for the assessment of the product and issue of the European Technical Approvals (ETA).

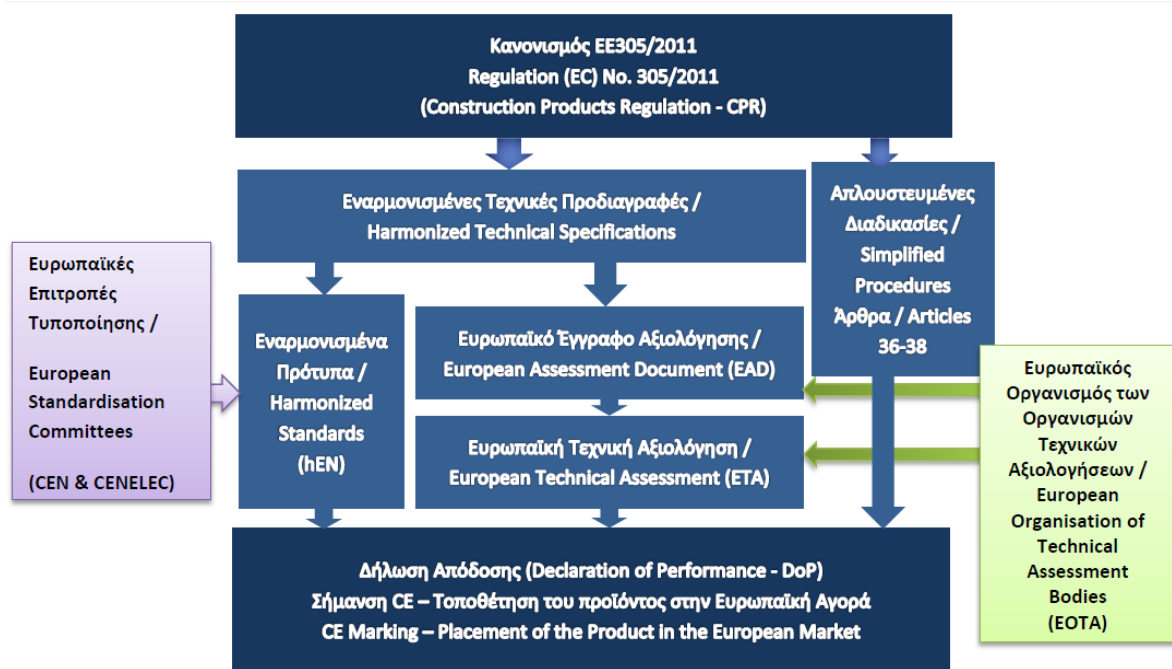
In 2013 the Construction Products Directive (CPD/89/106) has been replaced by the Regulation (EC) 305/2011 of the European Parliament and the Council (directive, of 9

March 2011, has laid down harmonized conditions for the marketing of construction products and repealing Council Directive 89/106/ECC).

According to the Regulation (EC) 305/2011, the Approval Bodies are replaced by the Technical Assessment Bodies (TAB) which are designed by the Member States in and are responsible for the establishment of draft European Assessment Documents for the issuing of the European Technical Assessments (ETA). TABs established the “organization of TABs”, EOTA, to coordinate procedures for the establishments of European Assessment Documents and for the issuing of the European Technical Assessments.

### 3. Harmonized Technical Specifications

Harmonized Technical Specifications have been established to assess the performance of the essential characteristics of the construction products and to contribute to the removal of technical barriers in the field of construction.



Harmonised technical specifications are defined in Harmonized Standards (hEN) and in European Assessment Documents (EAD).

When a construction product is covered by a harmonised standard or conforms to a European Technical Assessment, which has been issued for it, the manufacturer shall draw up a declaration of performance (DoP), and shall affix a CE marking on the product when it is placed on the market. Information declared on the DoP must be relevant to the essential characteristic as these are specified in harmonized specifications.

### 4. Harmonised Standards (hEN)

Harmonised standards are established by the European Committee for Standardisation (CEN) or the European Committee for Electrotechnical Standardisation (CENELEC) on the basis of requests (mandates) issued by the Commission. Harmonised standards provide methods and criteria for assessing the performance of the construction products in relation to their essential characteristics.

## **5. European Assessment Documents (EAD)**

The European Assessment Documents are drawn up and adopted by the organization of TABs (EOTA), following a request for a European Technical Assessment by a manufacturer.

EADs concerning construction products not covered or not fully covered by a harmonised standard for which the performance in relation to its essential characteristics cannot be entirely assessed according to an existing harmonised standard, because:

- The product does not fall within the scope of the existing harmonised standard,
- For at least one essential characteristic of that product the assessment method provided for in the harmonised standards is not applicable, or
- The harmonised standard does not provide for any assessment method in relation to at least one essential characteristic of that product.

The EAD contains among other the following information:

- a) general description of the construction product,
- b) a list of essential characteristics, relevant for the intended use of the products as foreseen by the manufacturer and agreed upon between the manufacturer and the TAB,
- c) assessment methods of the performance of the construction product,
- d) principles of the applicable factory production control.

## **6. European Technical Assessment (ETA)**

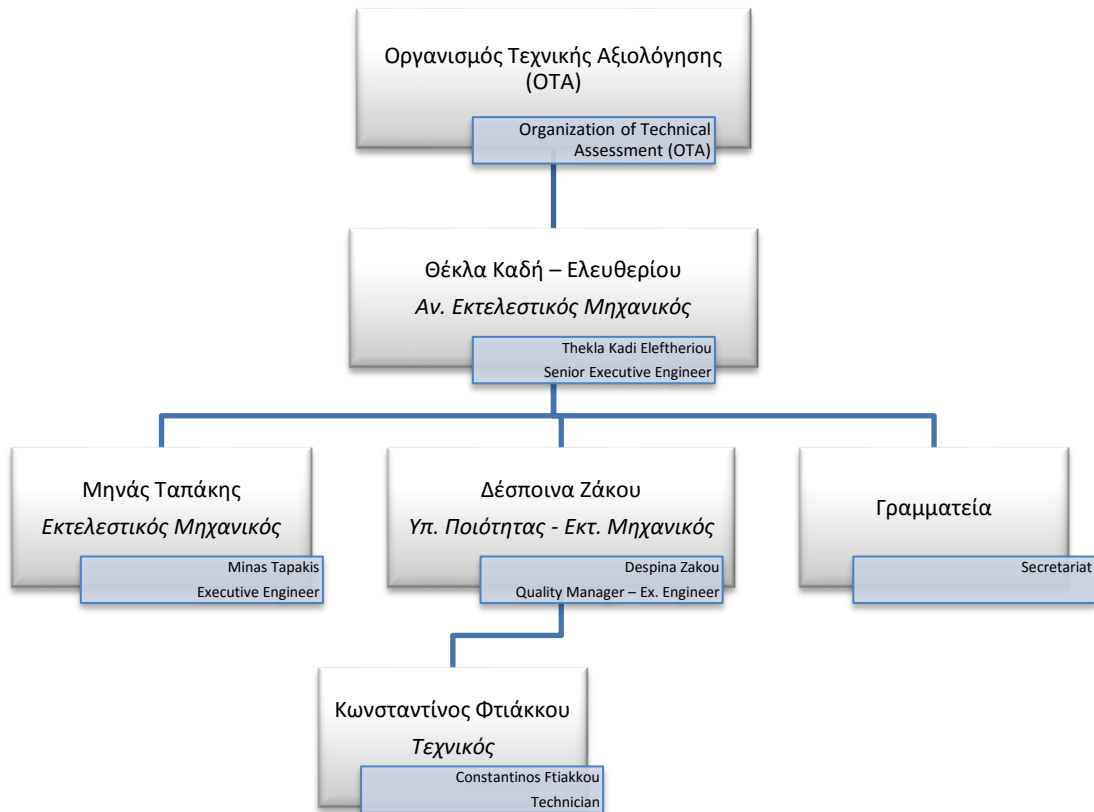
A European Technical Assessment (ETA) must be issued by a TAB, at the request of a manufacturer on the basis of an EAD and must be adopted by EOTA.

An ETA should include at least:

- the performance to be declared, of those essential characteristics agreed by the manufacturer and the TAB for the declared intended use,
- the technical details necessary for the implementation of the system of assessment and verification of constancy of performance.

On a product covered by ETA, which satisfies the requirements of the relevant system of conformity, must bare CE marking.

## 7. Organization of the TAB unit in Laboratory Sector of Public Work Department



## 8. Contact Us

Secretariat of the Head of the Sector

Telephone: 22 402 506

Fax: 22 305759

Email: [cee.lab\(at\)pwd.mcw.gov.cy](mailto:cee.lab(at)pwd.mcw.gov.cy)

Engineers telephones: 22 402505, 25803410

## 9. Useful Links

More information about ETA and TABs are available in EOTA's web page [www.eota.eu](http://www.eota.eu)